

Anti-ATP2C2 Antibody

Catalog Number: A09207

About ATP2C2

ATP2C2, also known as secretory pathway $\text{Ca}^{2+}/\text{Mn}^{2+}$ -ATPase (SPCA) 2, belongs to the family of P-type cation transport ATPases. This magnesium-dependent enzyme catalyzes the hydrolysis of ATP coupled with the transport of the calcium from the cytosol to the Golgi lumen. Defects in the related gene ATP2C1 cause Hailey-Hailey disease, for which ATP2C2 does not compensate, suggesting that ATP2C2 plays other physiological roles. Unlike ATP2C1, ATP2C2 has a much more restricted expression pattern and displays a higher maximal turnover rate for overall Ca^{2+} -ATPase reaction and a lower apparent affinity for cytosolic Ca^{2+} activation of phosphorylation. Overexpression of ATP2C2 in mammary tumors result a Ca^{2+} influx via the store-operated Ca^{2+} channel ORAI1 and independent of the STIM1 and STIM2 sensors.

Overview

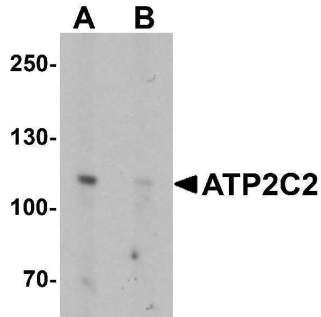
Product Name	Anti-ATP2C2 Antibody
Reactive Species	Human, Mouse
Description	Boster Bio Anti-ATP2C2 Antibody (Catalog # A09207). Tested in ELISA, WB, IF applications. This antibody reacts with Human, Mouse.
Application	ELISA, IF, WB
Clonality	Polyclonal
Formulation	ATP2C2 Antibody is supplied in PBS containing 0.02% sodium azide.
Storage Instructions	ATP2C2 antibody can be stored at 4°C for three months and -20°C, stable for up to one year. Avoid repeated freeze-thaw cycles. Antibodies should not be exposed to prolonged high temperatures.
Host	Rabbit
Uniprot ID	O75185

Technical Details

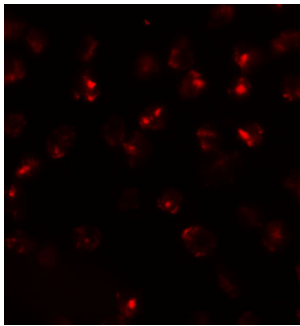
Immunogen	ATP2C2 antibody was raised against a 19 amino acid synthetic peptide near the amino terminus of human ATP2C2. The immunogen is located within the first 50 amino acids of ATP2C2.
Predicted Reactive Species	Bovine
Cross Reactivity	At least three isoforms of ATP2C2 are known to exist. ATP2C2 antibody will not cross-react with ATP2C1
Isotype	IgG
Form	Liquid
Concentration	1 mg/mL

Purification	ATP2C2 Antibody is affinity chromatography purified via peptide column.
Suggested Dilutions	ATP2C2 antibody can be used for detection of ATP2C2 by Western blot at 1 ug/mL. Antibody can also be used for immunofluorescence starting at 20 ug/mL. For immunofluorescence start at 20 ug/mL. Antibody validated: Western Blot in mouse samples and Immunofluorescence in mouse samples. All other applications and species not yet tested. Optimal dilutions for each application should be determined by the researcher.

Anti-ATP2C2 Antibody (A09207) Images



Western blot analysis of ATP2C2 in 3T3 cell lysate with ATP2C2 antibody at 1 ug/mL in (A) the absence and (B) the presence of blocking peptide.



Immunofluorescence of ATP2C2 in 3T3 cells with ATP2C2 antibody at 20 ug/mL.

Submit a product review to [Biocompare.com](https://www.biocompare.com)

Submit a review of this product to [Biocompare.com](https://www.biocompare.com) to receive a \$20 Amazon.com giftcard! Your reviews help your fellow scientists make the right decisions. Thank you for your contribution.



Anti-ATP2C2 Antibody

For Research Use Only. Not for use in diagnostic procedures.