

## Anti-MED6 Antibody Picoband™

Catalog Number: A09224

### About MED6

Mediator of RNA polymerase II transcription subunit 6 is one of the subunits of the Mediator complex. It is an enzyme that in humans is encoded by the MED6 gene. This family of proteins represent the transcriptional mediator protein subunit 6 that is required for activation of many RNA polymerase II promoters and which are conserved from yeast to humans.

### Overview

Product Name	Anti-MED6 Antibody Picoband™
Reactive Species	Human, Mouse, Rat
Description	Boster Bio Anti-MED6 Antibody Picoband™ catalog # A09224. Tested in ELISA, WB applications. This antibody reacts with Human, Mouse, Rat.
Application	ELISA, WB
Clonality	Polyclonal
Formulation	Each vial contains 4 mg Trehalose, 0.9 mg NaCl and 0.2 mg Na <sub>2</sub> HPO <sub>4</sub> .
Storage Instructions	Store at -20°C for one year from date of receipt. After reconstitution, at 4°C for one month. It can also be aliquotted and stored frozen at -20°C for six months. Avoid repeated freeze-thaw cycles.
Host	Rabbit
Uniprot ID	O75586

### Technical Details

Immunogen	E. coli-derived human MED6 recombinant protein (Position: F40-Q246).
Recommended Detection Systems	Boster recommends Enhanced Chemiluminescent Kit with anti-Rabbit IgG (EK1002) for Western blot.
Cross Reactivity	No cross-reactivity with other proteins.
Isotype	Rabbit IgG
Form	Lyophilized
Concentration	Adding 0.2 ml of distilled water will yield a concentration of 500 ug/ml.
Suggested Dilutions	Dilute the sample so that the expected range of concentrations fall within the detection range of this kit. If the expected range of concentration is unknown, a pilot test should be conducted to decide the optimal dilution ratio for your samples.

Some PubMed article(s) citing the expression level of this target are as follows:

Boster Bio's internal QC testing used:

Western blot, 0.1-0.5ug/ml

Direct ELISA, 0.1-0.5ug/ml

## Anti-MED6 Antibody Picoband™ (A09224) Images

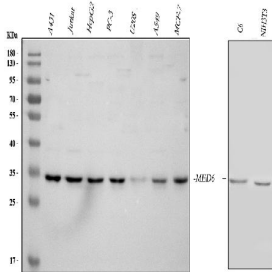


Figure 1. Western blot analysis of MED6 using anti-MED6 antibody (A09224).

Electrophoresis was performed on a 5-20% SDS-PAGE gel at 70V (Stacking gel) / 90V (Resolving gel) for 2-3 hours. The sample well of each lane was loaded with 30 ug of sample under reducing conditions.

Lane 1: human A431 whole cell lysates,  
Lane 2: human Jurkat whole cell lysates,  
Lane 3: human HepG2 whole cell lysates,  
Lane 4: human PC-3 whole cell lysates,  
Lane 5: human U2OS whole cell lysates,  
Lane 6: human A549 whole cell lysates,  
Lane 7: human MCF-7 whole cell lysates,  
Lane 8: rat C6 whole cell lysates.  
Lane 9: mouse NIH/3T3 whole cell lysates.

After electrophoresis, proteins were transferred to a nitrocellulose membrane at 150 mA for 50-90 minutes. Blocked the membrane with 5% non-fat milk/TBS for 1.5 hour at RT. The membrane was incubated with rabbit anti-MED6 antigen affinity purified polyclonal antibody (Catalog # A09224) at 0.5 ug/mL overnight at 4°C, then washed with TBS-0.1%Tween 3 times with 5 minutes each and probed with a goat anti-rabbit IgG-HRP secondary antibody at a dilution of 1:5000 for 1.5 hour at RT. The signal is developed using an Enhanced Chemiluminescent detection (ECL) kit (Catalog # EK1002) with Tanon 5200 system. A specific band was detected for MED6 at approximately 34 kDa. The expected band size for MED6 is at 28 kDa.

## Submit a product review to Biocompare.com

Submit a review of this product to Biocompare.com to receive a \$20 Amazon.com giftcard! Your reviews help your fellow scientists make the right decisions. Thank you for your contribution.



Anti-MED6 Antibody™