

Anti-Phospholipase A1 member A PLA1A Antibody

Catalog Number: A09234-1

About PLA1A

PLA1A is a phospholipase that hydrolyzes fatty acids at the sn-1 position of phosphatidylserine and 1-acyl-2-lysophosphatidylserine. This secreted protein hydrolyzes phosphatidylserine (PS) in liposomes and can also hydrolyze PS in apoptotic cells and activate platelets where the resulting 2-acyl-lysophosphatidylserine acts as a lipid mediator for mast cells, T cells, and neural cells, suggesting that a major function of PLA1A may be the production of lysophospholipid mediators. PLA1A is upregulated in rat peripheral blood cells bearing long-term surviving cardiac allograft. PLA1A is also expressed in human THP-1-derived macrophages and this expression is upregulated in cells treated with lipopolysaccharide, a TLR4 ligand. This upregulation is inhibited with corticosteroids, which are often used at high dosages to suppress chronic allograft rejection.

Overview

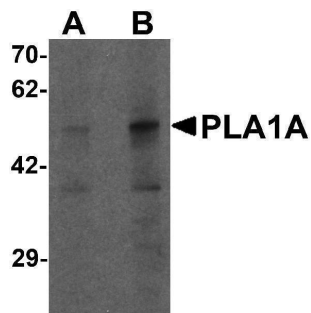
Product Name	Anti-Phospholipase A1 member A PLA1A Antibody
Reactive Species	Human, Rat
Description	Boster Bio Anti-Phospholipase A1 member A PLA1A Antibody (Catalog # A09234-1). Tested in ELISA, WB, IF applications. This antibody reacts with Human, Rat.
Application	ELISA, IF, WB
Clonality	Polyclonal
Formulation	PLA1A Antibody is supplied in PBS containing 0.02% sodium azide.
Storage Instructions	PLA1A antibody can be stored at 4°C for three months and -20°C, stable for up to one year. Avoid repeated freeze-thaw cycles. Antibodies should not be exposed to prolonged high temperatures.
Host	Rabbit
Uniprot ID	Q53H76

Technical Details

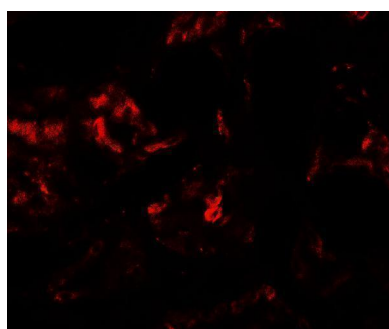
Immunogen	PLA1A antibody was raised against a 17 amino acid synthetic peptide near the carboxy terminus of human PLA1A. The immunogen is located within amino acids 380 - 430 of PLA1A.
Predicted Reactive Species	Bovine, Mouse
Cross Reactivity	At least three isoforms of PLA1A are known to exist; this antibody will detect all three isoforms.
Isotype	IgG
Form	Liquid
Concentration	1 mg/mL

Purification	PLA1A Antibody is affinity chromatography purified via peptide column.
Suggested Dilutions	PLA1A antibody can be used for detection of PLA1A by Western blot at 1 - 2 ug/mL. For immunofluorescence start at 20 ug/mL. Antibody validated: Western Blot in human samples and Immunofluorescence in human samples. All other applications and species not yet tested. Optimal dilutions for each application should be determined by the researcher.

Anti-Phospholipase A1 member A PLA1A Antibody (A09234-1) Images



Western blot analysis of PLA1A in human kidney tissue lysate with PLA1A antibody at (A) 1 and (B) 2 ug/mL.



Immunofluorescence of PLA1A in human kidney tissue with PLA1A antibody at 20 ug/mL.

Submit a product review to [Biocompare.com](https://www.biocompare.com)

Submit a review of this product to [Biocompare.com](https://www.biocompare.com) to receive a \$20 Amazon.com giftcard! Your reviews help your fellow scientists make the right decisions. Thank you for your contribution.



Anti-Phospholipase A1 member A PLA1A Antibody

For Research Use Only. Not for use in diagnostic procedures.