

## Anti-MS4A6A Antibody

Catalog Number: A09251

### About MS4A6A

The MS4A gene family in humans includes CD20 (MS4A1), FcRbeta (MS4A2), Htm4 (MS4A3), and at least 13 other genes encoding membrane proteins, most having characteristic tetraspanning topology and similar intron/exon splice boundaries. All family members display unique expression patterns among hematopoietic cells and non-lymphoid tissues. The function of MS4A6A has been suggested to be involved in signal transduction as a component of a multimeric receptor complex in Alzheimer's disease and cancer.

### Overview

Product Name	Anti-MS4A6A Antibody
Reactive Species	Human, Rat
Description	Boster Bio Anti-MS4A6A Antibody (Catalog # A09251). Tested in ELISA, WB, IHC-P, IF applications. This antibody reacts with Human, Rat.
Application	ELISA, IF, IHC-P, WB
Clonality	Polyclonal
Formulation	MS4A6A Antibody is supplied in PBS containing 0.02% sodium azide.
Storage Instructions	MS4A6A antibody can be stored at 4°C for three months and -20°C, stable for up to one year. Avoid repeated freeze-thaw cycles. Antibodies should not be exposed to prolonged high temperatures.
Host	Rabbit
Uniprot ID	Q9H2W1

### Technical Details

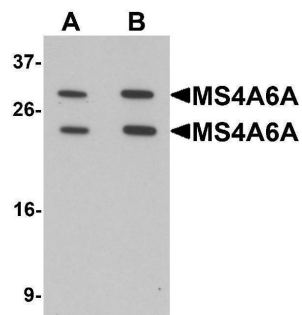
Immunogen	MS4A6A antibody was raised against a 19 amino acid synthetic peptide near the amino terminus of human MS4A6A. The immunogen is located within the first 50 amino acids of MS4A6A.
Predicted Reactive Species	Bovine, Mouse
Cross Reactivity	At least three isoforms of MS4A6A are known to exist; this antibody will detect the two longer isoforms. MS4A6A antibody is predicted to not cross-react with MS4A family members.
Isotype	IgG
Form	Liquid
Concentration	1 mg/mL
Purification	MS4A6A Antibody is affinity chromatography purified via peptide column.

Suggested Dilutions

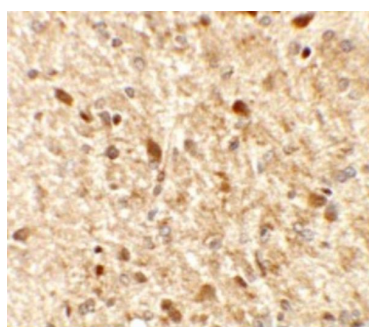
MS4A6A antibody can be used for detection of MS4A6A by Western blot at 1 - 2 ug/mL. Antibody can also be used for immunohistochemistry starting at 2.5 ug/mL. For immunofluorescence start at 20 ug/mL.

Antibody validated: Western Blot in human samples; Immunohistochemistry in rat samples and Immunofluorescence in rat samples. All other applications and species not yet tested. Optimal dilutions for each application should be determined by the researcher.

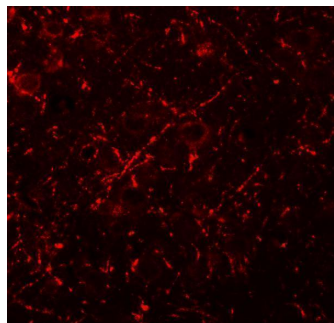
## Anti-MS4A6A Antibody (A09251) Images



Western blot analysis of MS4A6A in 293 cell lysate with MS4A6A antibody at (A) 1 and (B) 2 ug/mL.



Immunohistochemistry of MS4A6A in rat brain tissue with MS4A6A antibody at 2.5 ug/mL.



Immunofluorescence of MS4A6A in rat brain tissue with MS4A6A antibody at 20 ug/mL.

### Submit a product review to [Biocompare.com](https://www.biocompare.com)

Submit a review of this product to [Biocompare.com](https://www.biocompare.com) to receive a \$20 Amazon.com giftcard! Your reviews help your fellow scientists make the right decisions. Thank you for your contribution.



### Anti-MS4A6A Antibody

For Research Use Only. Not for use in diagnostic procedures.