

Anti-Rkhd2 MEX3C Antibody

Catalog Number: A09281

About MEX3C

Rkhd2, also known as MEX3C is a member of a novel family of four homologous human MEX3 proteins each containing two heterogeneous nuclear ribonucleoprotein K homology (KH) domains and one carboxy-terminal RING finger module. MEX3 proteins, including Rkhd2, are phosphoproteins that bind RNA through their KH domains and shuttle between the nucleus and the cytoplasm via the CRM1 export pathway. These proteins are a novel family of evolutionarily conserved RNA-binding proteins, differentially recruited to P bodies and potentially involved in post-transcriptional regulatory mechanisms. It has been suggested that genetic variations in Rkhd2 may be associated with susceptibility to essential hypertension type 8. Rkhd3 and Rkhd4, but not Rkhd2, co-localize with both the hDcp1a decapping factor and Argonaute (Ago) proteins in processing bodies (P bodies), recently characterized as centers of mRNA turnover.

Overview

Product Name	Anti-Rkhd2 MEX3C Antibody
Reactive Species	Human, Mouse, Rat
Description	Boster Bio Anti-Rkhd2 MEX3C Antibody (Catalog # A09281). Tested in ELISA, WB applications. This antibody reacts with Human, Mouse, Rat.
Application	ELISA, WB
Clonality	Polyclonal
Formulation	Rkhd2 Antibody is supplied in PBS containing 0.02% sodium azide.
Storage Instructions	Rkhd2 antibody can be stored at 4°C for three months and -20°C, stable for up to one year. Avoid repeated freeze-thaw cycles. Antibodies should not be exposed to prolonged high temperatures.
Host	Rabbit
Uniprot ID	Q5U5Q3

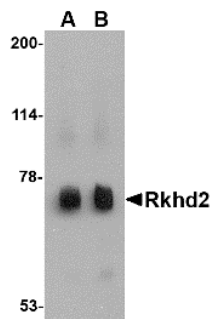
Technical Details

Immunogen	Rkhd2 antibody was raised against a 15 amino acid synthetic peptide from near the carboxy terminus of human RKHD2. The immunogen is located within amino acids 540 - 590 of Rkhd2.
Predicted Reactive Species	Bovine, Mouse
Isotype	IgG
Form	Liquid
Concentration	1 mg/mL
Purification	Rkhd2 Antibody is affinity chromatography purified via peptide column.

Suggested Dilutions

Rkhd2 antibody can be used for detection of Rkhd2 by Western blot at 0.5 - 1 ug/mL.
Antibody validated: Western Blot in rat samples. All other applications and species not yet tested.
Optimal dilutions for each application should be determined by the researcher.

Anti-Rkhd2 MEX3C Antibody (A09281) Images



Western blot analysis of Rkhd2 in rat heart tissue lysate with Rkhd2 antibody at (A) 0.5 ug/mL and (B) 1 ug/mL.

Submit a product review to Biocompare.com

Submit a review of this product to Biocompare.com to receive a \$20 Amazon.com giftcard! Your reviews help your fellow scientists make the right decisions. Thank you for your contribution.



Anti-Rkhd2 MEX3C Antibody

For Research Use Only. Not for use in diagnostic procedures.