

## Anti-Ankrd26 Antibody

Catalog Number: A09289

### About ANKRD26

This antibody is suitable for Cancer, Immunology and Nuclear Signaling research. POTE gene is expressed in prostate and breast cancer and a potential candidate for immuno-therapy. It is also expressed in undifferentiated embryonic stem (ES) cells. ANKRD-26 is the ancestral gene of POTE and has a homologue in mouse. Mouse Ankrd26 is also selectively expressed in ES cells and various cancers but not in other adult tissues. The encoded protein of Ankrd26 contains ankyrin repeats and coiled coil domain of spectrin suggestive of a signaling molecule.

### Overview

Product Name	Anti-Ankrd26 Antibody
Reactive Species	Mouse
Description	Boster Bio Anti-Ankrd26 Antibody (Catalog # A09289). Tested in ELISA, WB applications. This antibody reacts with Mouse.
Application	ELISA, WB
Clonality	Polyclonal
Formulation	0.02 M Potassium Phosphate, 0.15 M Sodium Chloride, pH 7.2, 0.01% (w/v) Sodium Azide
Storage Instructions	Store vial at -20°C prior to opening. Aliquot contents and freeze at -20°C or below for extended storage. Avoid cycles of freezing and thawing. Centrifuge product if not completely clear after standing at room temperature. This product is stable for several weeks at 4°C as an undiluted liquid. Dilute only prior to immediate use. Expiration date is one (1) year from date of opening. (Ship on dry ice.)
Host	Rabbit
Uniprot ID	Q811D2

### Technical Details

Immunogen	This affinity purified antibody was prepared from whole rabbit serum produced by repeated immunizations with a synthetic peptide corresponding to the N-Terminal region near amino acids 1-25 of mouse Ankrd26 protein.
Predicted Reactive Species	Chimpanzee
Isotype	IgG
Form	Liquid (sterile filtered)
Concentration	1.48 mg/mL by UV absorbance at 280 nm
Purification	This affinity-purified antibody is directed against mouse Ankrd26 protein. The product was affinity

purified from monospecific antiserum by immunoaffinity purification. A BLAST analysis was used to suggest cross-reactivity with Ankrd26 proteins from mouse (100%), rat (93%), bovine (81%) and human (68%). Reactivity against homologues from other sources is not known.

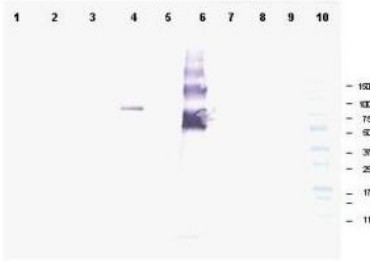
**Suggested Dilutions**

ELISA: 1:20,000 - 1:80,000

WB: 1:500 - 1:3,000

This affinity purified antibody has been tested for use in ELISA and by western blot. Specific conditions for reactivity should be optimized by the end user. Expect a band approximately 81 kDa in size corresponding to Ankrd26 by western blotting in the appropriate mouse tissue.

## Anti-Ankrd26 Antibody (A09289) Images



Western blot using Boster's affinity purified anti-Ankrd26 antibody shows detection of a band at ~81 kDa corresponding to mouse Ankrd26 protein. Lane 1 Blank, Lane 2 MES cell lysate - 80 µg, Lane 3 MES cell lysate - 40 µg, Lane 4 293T-ANKRD26 transfected cell lysate - 20 µg, Lane 5 control 293T cell lysate - 20 µg, Lane 6 BSA-ANKRD26 conjugate 20 ng, Lane 7 BSA - 500 ng, Lane 8 BSA - 100 ng, Lane 9 BSA 20 ng and Lane 10 Protein standards. Detection of endogenous Ankrd26 protein in MES cell lysates may occur when detection methods with higher sensitivity are used. Proteins were separated by SDS-PAGE, transferred to nitrocellulose, and probed with the primary antibody diluted to 1:1,000 followed by detection using ALP conjugated Gt-a-Rabbit IgG (611-105-122 is suggested) diluted to 1:3,000. Size estimation was made by comparison to prestained MW markers as indicated. Personal Communication. Ira Pastan, NIH, CCR, Bethesda, MD.

### Submit a product review to [Biocompare.com](https://www.biocompare.com)

Submit a review of this product to [Biocompare.com](https://www.biocompare.com) to receive a \$20 Amazon.com giftcard! Your reviews help your fellow scientists make the right decisions. Thank you for your contribution.



### Anti-Ankrd26 Antibody

For Research Use Only. Not for use in diagnostic procedures.