

Anti-POLR2C Antibody (C-term)

Catalog Number: A09308-1

About POLR2C

DNA-dependent RNA polymerase catalyzes the transcription of DNA into RNA using the four ribonucleoside triphosphates as substrates. Component of RNA polymerase II which synthesizes mRNA precursors and many functional non-coding RNAs. Pol II is the central component of the basal RNA polymerase II transcription machinery. It is composed of mobile elements that move relative to each other. RPB3 is part of the core element with the central large cleft and the clamp element that moves to open and close the cleft (By similarity).

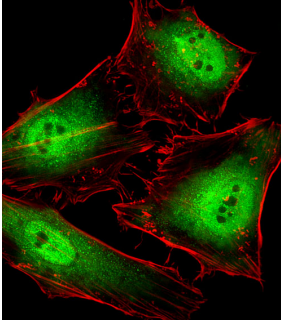
Overview

Product Name	Anti-POLR2C Antibody (C-term)
Reactive Species	Human, Mouse
Description	Boster Bio Anti-POLR2C Antibody (C-term) (Catalog # A09308-1). Tested in IF, WB, IHC-P application(s). This antibody reacts with Human, Mouse.
Application	IF, IHC-P, WB
Clonality	Polyclonal
Formulation	Purified polyclonal antibody supplied in PBS with 0.09% (W/V) sodium azide.
Storage Instructions	Maintain refrigerated at 2-8°C for up to 2 weeks. For long-term storage, store at -20°C in small aliquots to prevent freeze-thaw cycles.
Host	Rabbit
Uniprot ID	P19387

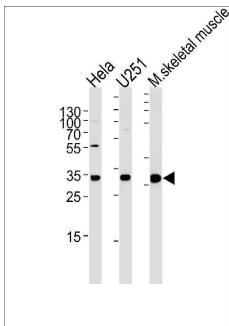
Technical Details

Immunogen	This POLR2C antibody is generated from rabbits immunized with a KLH conjugated synthetic peptide between 200-228 amino acids from the C-terminal region of human POLR2C.
Predicted Reactive Species	Bovine
Isotype	Rabbit IgG
Purification	This antibody is purified through a protein A column, followed by peptide affinity purification.
Suggested Dilutions	IF: 1:25 WB: 1:1000 IHC-P: 1:100

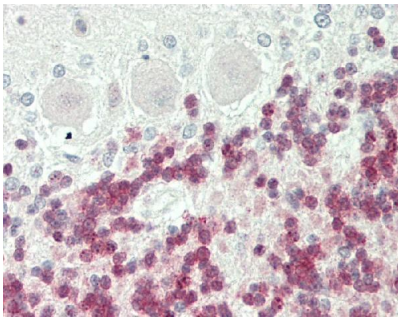
Anti-POLR2C Antibody (C-term) (A09308-1) Images



Fluorescent image of HeLa cells stained with POLR2C Antibody (C-term). A09308-1 was diluted at 1:25 dilution. An Alexa Fluor 488-conjugated goat anti-rabbit IgG at 1:400 dilution was used as the secondary antibody (green). Cytoplasmic actin was counterstained with Alexa Fluor® 555 conjugated with Phalloidin (red).



POLR2C Antibody (C-term) western blot analysis in HeLa, U251 cell line and mouse skeletal muscle tissue lysates (35ug/lane). This demonstrates the POLR2C antibody detected the POLR2C protein (arrow).



Formalin-fixed and paraffin-embedded H. brain, H. cerebellum tissue reacted with POLR2C Antibody (C-term).

Submit a product review to [Biocompare.com](https://www.biocompare.com)

Submit a review of this product to [Biocompare.com](https://www.biocompare.com) to receive a \$20 Amazon.com giftcard! Your reviews help your fellow scientists make the right decisions. Thank you for your contribution.



Anti-POLR2C Antibody (C-term)

For Research Use Only. Not for use in diagnostic procedures.