

Anti-Protein lin-54 homolog LIN54 Antibody

Catalog Number: A09336

About LIN54

LIN54 is a component of the LIN, or DREAM, complex, an essential regulator of cell cycle genes. This complex functions as a transcriptional repressor by binding to promoters of E2F target genes that regulate the G1/S transition (1). LIN54 is required for cell cycle progression and can bind to the cdc2 promoter in a sequence-specific manner (2).

Overview

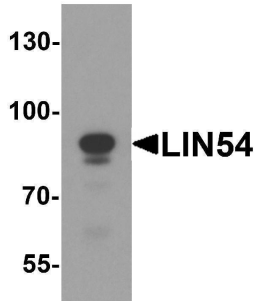
Product Name	Anti-Protein lin-54 homolog LIN54 Antibody
Reactive Species	Human, Mouse, Rat
Description	Boster Bio Anti-Protein lin-54 homolog LIN54 Antibody (Catalog # A09336). Tested in ELISA, WB, ICC, IF applications. This antibody reacts with Human, Mouse, Rat.
Application	ELISA, IF, ICC, WB
Clonality	Polyclonal
Formulation	LIN54 antibody is supplied in PBS containing 0.02% sodium azide.
Storage Instructions	LIN54 antibody can be stored at 4°C for three months and -20°C, stable for up to one year.
Host	Rabbit
Uniprot ID	Q6MZP7

Technical Details

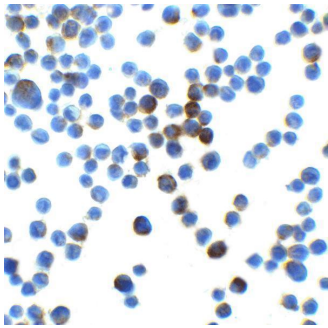
Immunogen	LIN54 antibody was raised against a 16 amino acid peptide near the carboxy terminus of human LIN54. The immunogen is located within the last 50 amino acids of LIN54.
Predicted Reactive Species	Bovine, Mouse
Cross Reactivity	LIN54 antibody is human, mouse, and rat reactive. Multiple isoforms of LIN54 are known to exist.
Isotype	IgG
Form	Liquid
Concentration	1 mg/mL
Purification	LIN54 antibody is affinity chromatography purified via peptide column.
Suggested Dilutions	LIN54 antibody can be used for detection of LIN54 by Western blot at 1 - 2 ug/mL. Antibody can also be used for immunocytochemistry at 2.5 ug/mL. For immunofluorescence start at 20 ug/mL. Antibody validated: Western Blot in human samples; Immunocytochemistry in human samples and

Immunofluorescence in human samples. All other applications and species not yet tested. Optimal dilutions for each application should be determined by the researcher.

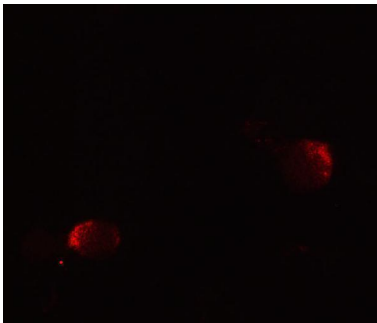
Anti-Protein lin-54 homolog LIN54 Antibody (A09336) Images



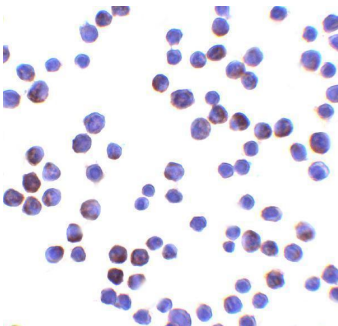
Western blot analysis of LIN54 in HeLa cell lysate with LIN54 antibody at 1 ug/ml.



Immunocytochemistry of LIN54 in HeLa cells with LIN54 at 2.5 ug/mL.

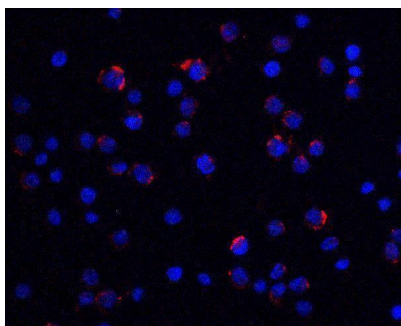


Immunofluorescence of LIN54 in HeLa cells with LIN54 antibody at 20 ug/ml.



Immunocytochemistry of LIN54 in HeLa cells with LIN54 antibody at 10 ug/ml.

Immunofluorescence of LIN54 in HeLa cells with LIN54 antibody at 20 ug/ml. Red: LIN54 Antibody (A09336) Blue: DAPI staining



Submit a product review to Biocompare.com

Submit a review of this product to Biocompare.com to receive a \$20 Amazon.com giftcard! Your reviews help your fellow scientists make the right decisions. Thank you for your contribution.



Anti-Protein lin-54 homolog LIN54 Antibody

For Research Use Only. Not for use in diagnostic procedures.