

Anti-Bcl-G BCL2L14 Antibody

Catalog Number: A09347

About BCL2L14

Members in the Bcl-2 family are critical regulators of apoptosis by either inhibiting or promoting cell death. Bcl-2 homology 3 (BH3) domain is a potent death domain. BH3 domain containing pro-apoptotic proteins, including Bad, Bax, Bid, Bik, and Hrk, form a growing subclass of the Bcl-2 family. A novel BH3 domain containing protein was recently identified and designated Bcl-G. The mRNA of Bcl-G encodes 2 isoforms, Bcl-GL, which is widely expressed in multiple tissues, and Bcl-GS, which is only found in testis. The Bcl-GS protein is predominantly localized to cytoplasmic organelles whereas Bcl-GL was distributed throughout the cytosol. Overexpression of either protein induced apoptosis, although Bcl-GS was far more potent than Bcl-GL. Apoptosis induction was dependent on the BH3 domain and could be suppressed by co-expression with the anti-apoptotic Bcl-XL protein.

Overview

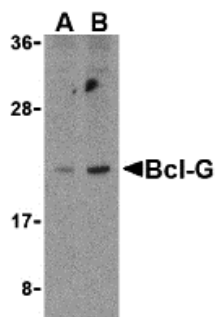
Product Name	Anti-Bcl-G BCL2L14 Antibody
Reactive Species	Human, Mouse, Rat
Description	Boster Bio Anti-Bcl-G BCL2L14 Antibody (Catalog # A09347). Tested in ELISA, WB, IHC-P, IF applications. This antibody reacts with Human, Mouse, Rat.
Application	ELISA, IF, IHC-P, WB
Clonality	Polyclonal
Formulation	Bcl-G Antibody is supplied in PBS containing 0.02% sodium azide.
Storage Instructions	Bcl-G antibody can be stored at 4°C for three months and -20°C, stable for up to one year. Avoid repeated freeze-thaw cycles. Antibodies should not be exposed to prolonged high temperatures.
Host	Rabbit
Uniprot ID	Q9BZR8

Technical Details

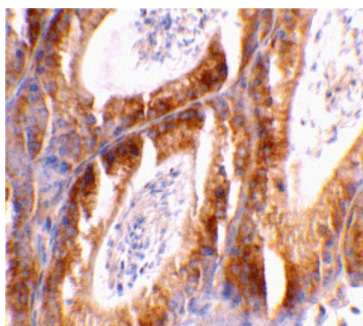
Immunogen	Bcl-G antibody was raised against a peptide corresponding to 15 amino acids near the N-terminus of human Bcl-G. The immunogen is located within the first 50 amino acids of Bcl-G.
Predicted Reactive Species	Bovine
Cross Reactivity	Although antibody should react with both isoforms, only the Bcl-GS protein has been observed
Isotype	IgG
Form	Liquid
Concentration	1 mg/mL

Purification	Bcl-G Antibody is Ion exchange chromatography purified.
Suggested Dilutions	<p>Bcl-G antibody can be used for detection of Bcl-G by Western blot at 2.5 to 5 ug/mL. Antibody can also be used for immunohistochemistry starting at 2 ug/mL. For immunofluorescence start at 10 ug/mL.</p> <p>Antibody validated: Western Blot in human samples; Immunohistochemistry in mouse samples and Immunofluorescence in mouse samples. All other applications and species not yet tested. Optimal dilutions for each application should be determined by the researcher.</p>

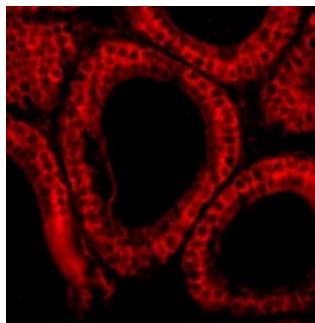
Anti-Bcl-G BCL2L14 Antibody (A09347) Images



Western blot analysis of Bcl-G in U937 cell lysates with Bcl-G antibody at (A) 2.5 and (B) 5 ug/mL.



Immunohistochemical staining of mouse testis tissue using Bcl-G antibody at 2 ug/mL.



Immunofluorescence of Bcl-G in Mouse Testis cells with Bcl-G antibody at 10 ug/mL.

Submit a product review to [Biocompare.com](https://www.biocompare.com)

Submit a review of this product to [Biocompare.com](https://www.biocompare.com) to receive a \$20 Amazon.com giftcard! Your reviews help your fellow scientists make the right decisions. Thank you for your contribution.



Anti-Bcl-G BCL2L14 Antibody

For Research Use Only. Not for use in diagnostic procedures.