

Anti-Cleaved-Cathepsin L2 (L114) CTSV Antibody

Catalog Number: A09374

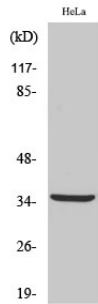
Overview

Product Name	Anti-Cleaved-Cathepsin L2 (L114) CTSV Antibody
Reactive Species	Human, Monkey
Description	Boster Bio Anti-Cleaved-Cathepsin L2 (L114) CTSV Antibody catalog # A09374. Tested in WB, ELISA applications. This antibody reacts with Human, Monkey.
Application	ELISA, WB
Clonality	Polyclonal
Formulation	Liquid in PBS containing 50% glycerol, 0.5% stabilizing protein and 0.02% sodium azide. This antibody is supplied in a stabilized formulation. Compatibility with conjugation reactions depends on the chemistry of the conjugation method used. For conjugation methods that are not compatible with the stabilizing components present in this formulation, a carrier-free antibody format is required.
Storage Instructions	Store at -20°C for one year. For short term storage and frequent use, store at 4°C for up to one month. Avoid repeated freeze-thaw cycles.
Host	Rabbit
Uniprot ID	O60911

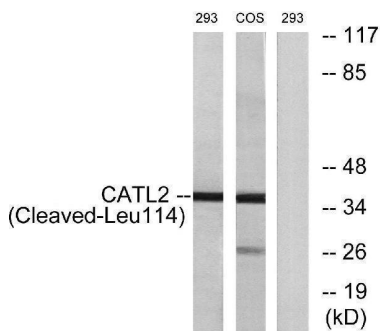
Technical Details

Immunogen	The antiserum was produced against synthesized peptide derived from human CATL2. AA range:95-144
Cross Reactivity	No cross reactivity with other proteins.
Isotype	IgG
Form	Liquid
Concentration	1 mg/ml
Purification	Immunogen affinity purified
Suggested Dilutions	WB 1:500-1:2000 ELISA 1:20000

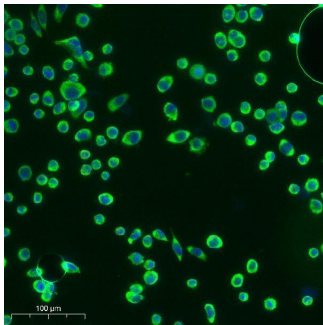
Anti-Cleaved-Cathepsin L2 (L114) CTSV Antibody (A09374) Images



Western Blot analysis of various cells using Cleaved-Cathepsin L2 (L114) Polyclonal Antibody



Western blot analysis of lysates from 293 and COS cells, treated with etoposide 25uM 1h, using CATL2 (Cleaved-Leu114) Antibody. The lane on the right is blocked with the synthesized peptide.



Immunofluorescence analysis of Siha cell. 1, primary Antibody was diluted at 1:100 (4°C overnight). 2, Goat Anti Rabbit IgG (H&L) - AFuor 488 Secondary antibody was diluted at 1:500 (room temperature, 50min).

Submit a product review to Biocompare.com

Submit a review of this product to Biocompare.com to receive a \$20 Amazon.com giftcard! Your reviews help your fellow scientists make the right decisions. Thank you for your contribution.



Anti-Cleaved-Cathepsin L2 (L114) CTSV Antibody

For Research Use Only. Not for use in diagnostic procedures.