

## Anti-Homeobox protein Nkx-2.6 NKX2-6 Antibody

Catalog Number: A09381-1

### About NKX2-6

NKX2-6 (NK2 homeobox 6) is a member of a family of transcription factors that are involved in embryonic development and cell fate. NKX2-6 is a vertebrate homolog of Drosophila homeobox-containing protein called 'tinman', which has been shown to be essential for development of the heart-like dorsal vessel. In conjunction with related gene, NKX2-5, this gene may play a role in both pharyngeal and cardiac embryonic development. Mutations in this gene are thought to be a cause for some congenital heart abnormalities.

### Overview

Product Name	Anti-Homeobox protein Nkx-2.6 NKX2-6 Antibody
Reactive Species	Human, Mouse
Description	Boster Bio Anti-Homeobox protein Nkx-2.6 NKX2-6 Antibody (Catalog # A09381-1). Tested in ELISA, WB, IHC-P, IF applications. This antibody reacts with Human, Mouse.
Application	ELISA, IF, IHC-P, WB
Clonality	Polyclonal
Formulation	NKX2-6 Antibody is supplied in PBS containing 0.02% sodium azide.
Storage Instructions	NKX2-6 antibody can be stored at 4°C for three months and -20°C, stable for up to one year. Avoid repeated freeze-thaw cycles. Antibodies should not be exposed to prolonged high temperatures.
Host	Rabbit
Uniprot ID	A6NCS4

### Technical Details

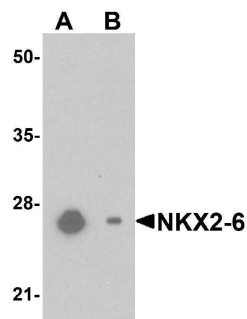
Immunogen	NKX2-6 antibody was raised against a 15 amino acid synthetic peptide near the center of human NKX2-6. The immunogen is located within amino acids 170 - 220 of NKX2-6.
Predicted Reactive Species	Bovine, Mouse, Pig
Cross Reactivity	NKX2-6 antibody is predicted to not cross-react with other NK2 homeobox family members. At least two isoforms of NKX2-6 are known to exist; this antibody will detect both isoforms
Isotype	IgG
Form	Liquid
Concentration	1 mg/mL
Purification	NKX2-6 Antibody is affinity chromatography purified via peptide column.

Suggested Dilutions

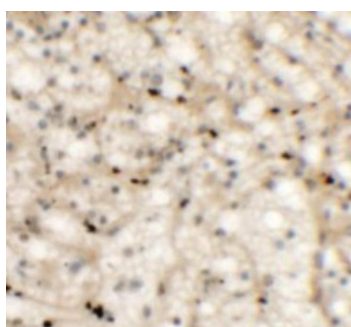
NKX2-6 antibody can be used for detection of NKX2-6 by Western blot at 1 ug/mL. Antibody can also be used for immunohistochemistry starting at 5 ug/mL. For immunofluorescence start at 5 ug/mL.

Antibody validated: Western Blot in mouse samples; Immunohistochemistry in human samples and Immunofluorescence in human samples. All other applications and species not yet tested. Optimal dilutions for each application should be determined by the researcher.

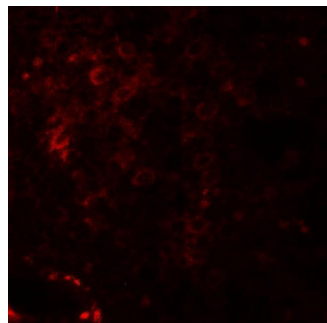
## Anti-Homeobox protein Nkx-2.6 NKX2-6 Antibody (A09381-1) Images



Western blot analysis of NKX2-6 in mouse heart tissue lysate with NKX2-6 antibody at 1 ug/mL in (A) the absence and (B) the presence of blocking peptide.



Immunohistochemistry of NKX2-6 in human spleen tissue with NKX2-6 antibody at 5 ug/mL.



Immunofluorescence of NKX-6 in human spleen tissue with NKX2-6 antibody at 20 ug/mL.

### Submit a product review to [Biocompare.com](https://www.biocompare.com)

Submit a review of this product to [Biocompare.com](https://www.biocompare.com) to receive a \$20 Amazon.com giftcard! Your reviews help your fellow scientists make the right decisions. Thank you for your contribution.



Anti-Homeobox protein Nkx-2.6 NKX2-6 Antibody

For Research Use Only. Not for use in diagnostic procedures.