

Anti-ZIP5 SLC39A5 Antibody

Catalog Number: A09389

About SLC39A5

The zinc transporter ZIP5, also known as SLC39A5, is a member of a family of divalent ion transporters. Zinc is an essential ion for cells and plays significant roles in the growth, development, and differentiation. ZIP5 is closely related to ZIP4, and is found in many of the same tissues, including intestine, pancreas, liver, and kidney, but unlike ZIP4, ZIP5 localizes to the basolateral membrane in kidney cells and its activity is not downregulated by zinc repletion. Recent evidence suggests that ZIP4 and ZIP5 are reciprocally regulated, with translation of ZIP5 mRNA decreasing and ZIP5 protein being rapidly internalized and degraded in response to zinc deficiency.

Overview

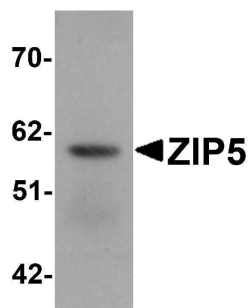
Product Name	Anti-ZIP5 SLC39A5 Antibody
Reactive Species	Human, Mouse
Description	Boster Bio Anti-ZIP5 SLC39A5 Antibody (Catalog # A09389). Tested in ELISA, WB, IHC-P, IF applications. This antibody reacts with Human, Mouse.
Application	ELISA, IF, IHC-P, WB
Clonality	Polyclonal
Formulation	ZIP5 Antibody is supplied in PBS containing 0.02% sodium azide.
Storage Instructions	Antibody can be stored at 4°C up to one year. Antibodies should not be exposed to prolonged high temperatures.
Host	Rabbit
Uniprot ID	Q6ZMH5

Technical Details

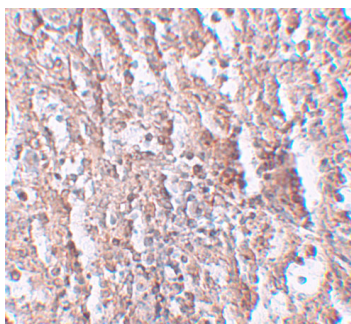
Immunogen	ZIP5 antibody was raised against a 17 amino acid synthetic peptide near the center of human ZIP5. The immunogen is located within amino acids 330 - 380 of ZIP5.
Predicted Reactive Species	Bovine, Mouse, Pig
Isotype	IgG
Form	Liquid
Concentration	1 mg/mL
Purification	ZIP5 Antibody is affinity chromatography purified via peptide column.
Suggested Dilutions	ZIP5 antibody can be used for detection of ZIP5 by Western blot at 1 - 2 ug/mL. Antibody can also be used for immunohistochemistry starting at 2.5 ug/mL. For immunofluorescence start at 20 ug/mL.

Antibody validated: Western Blot in human samples; Immunohistochemistry in human samples and Immunofluorescence in human samples. All other applications and species not yet tested. Optimal dilutions for each application should be determined by the researcher.

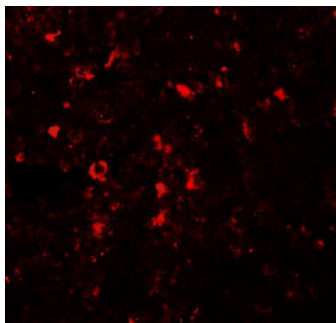
Anti-ZIP5 SLC39A5 Antibody (A09389) Images



Western blot analysis of ZIP5 in human spleen tissue lysate with ZIP5 antibody at 1 ug/mL.



Immunohistochemistry of ZIP5 in human spleen tissue with ZIP5 antibody at 2.5 ug/mL.



Immunofluorescence of ZIP5 in human spleen tissue with ZIP5 antibody at 20 ug/mL.

Submit a product review to [Biocompare.com](https://www.biocompare.com)

Submit a review of this product to [Biocompare.com](https://www.biocompare.com) to receive a \$20 Amazon.com giftcard! Your reviews help your fellow scientists make the right decisions. Thank you for your contribution.



Anti-ZIP5 SLC39A5 Antibody

For Research Use Only. Not for use in diagnostic procedures.