

Anti-DC-LAMP LAMP3 Antibody

Catalog Number: A09406

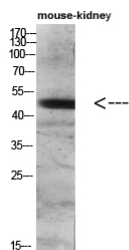
Overview

Product Name	Anti-DC-LAMP LAMP3 Antibody
Reactive Species	Human, Mouse, Rat
Description	Boster Bio Anti-DC-LAMP LAMP3 Antibody catalog # A09406. Tested in WB, IHC, IF, ELISA applications. This antibody reacts with Human, Mouse, Rat.
Application	ELISA, IF, IHC, WB
Clonality	Polyclonal
Formulation	PBS, pH 7.4, containing 0.02% sodium azide as Preservative and 50% Glycerol.
Storage Instructions	Store at -20°C for one year. For short term storage and frequent use, store at 4°C for up to one month. Avoid repeated freeze-thaw cycles.
Host	Rabbit
Uniprot ID	Q9UQV4

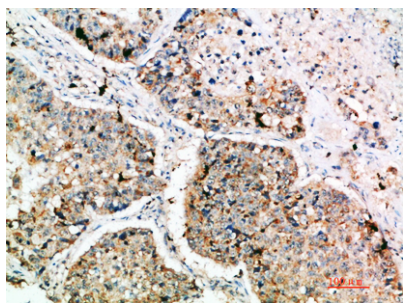
Technical Details

Immunogen	Synthetic peptide from human protein at AA range: 261-310
Cross Reactivity	No cross reactivity with other proteins.
Isotype	IgG
Form	Liquid
Concentration	1 mg/ml
Purification	The antibody was affinity-purified from rabbit serum by affinity-chromatography using a specific immunogen.
Suggested Dilutions	WB 1:500-2000 IHC 1:500-200 ELISA 1:10000-20000 IF 1:50-200

Anti-DC-LAMP LAMP3 Antibody (A09406) Images



Western blot analysis of mouse-lung mouse-heart 293T HeLa 3T3 lysate, antibody was diluted at 500. Secondary antibody was diluted at 1:20000



Immunohistochemical analysis of paraffin-embedded human-lung-cancer, antibody was diluted at 1:200

Submit a product review to Biocompare.com

Submit a review of this product to Biocompare.com to receive a \$20 Amazon.com giftcard! Your reviews help your fellow scientists make the right decisions. Thank you for your contribution.



Anti-DC-LAMP LAMP3 Antibody

For Research Use Only. Not for use in diagnostic procedures.