

Anti-LAMP3 Antibody

Catalog Number: A09406-3

About LAMP3

Dendritic cells (DCs) are the most potent antigen-presenting cells. Immature DCs efficiently capture antigens and differentiate into interdigitating dendritic cells (IDCs) in lymphoid tissues that induce primary T-cell responses (summary by de Saint-Vis et al., 1998 [PubMed 9768752]).

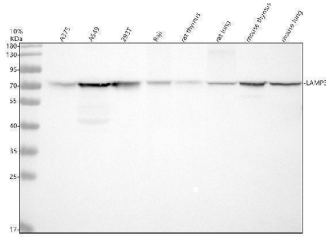
Overview

Product Name	Anti-LAMP3 Antibody
Reactive Species	Human, Monkey, Mouse, Rat
Description	Boster Bio Anti-LAMP3 Antibody catalog # A09406-3. Tested in WB, IHC, IP, ELISA applications. This antibody reacts with Human, Monkey, Mouse, Rat.
Application	ELISA, IP, IHC, WB
Clonality	Polyclonal
Formulation	500 ug/ml antibody with PBS, 0.02% NaN ₃ , 1 mg stabilizing protein and 50% glycerol This antibody is supplied in a stabilized formulation. Compatibility with conjugation reactions depends on the chemistry of the conjugation method used. For conjugation methods that are not compatible with the stabilizing components present in this formulation, a carrier-free antibody format is required.
Storage Instructions	12 months from date of receipt at -20°C as supplied. 6 months at 2 to 8°C after reconstitution. Avoid repeated freezing and thawing.
Host	Rabbit
Uniprot ID	Q9UQV4

Technical Details

Immunogen	E.coli-derived human LAMP3 recombinant protein (Position: T33-T381).
Form	Liquid
Concentration	500 ug/ml
Purification	Immunogen affinity purified.
Suggested Dilutions	Western blot, 1:500-2000 Immunohistochemistry, 1:50-400 Immunoprecipitation, 1:50 ELISA, 1:100-1000

Anti-LAMP3 Antibody (A09406-3) Images



Western blot analysis of LAMP3 using anti-LAMP3 antibody (A09406-3). Electrophoresis was performed on a 10% SDS-PAGE gel at 80V (Stacking gel) / 120V (Resolving gel) for 2 hours. The sample well of each lane was loaded with 30 ug of sample under reducing conditions. Lane 1: human A375 whole cell lysates, Lane 2: human A549 whole cell lysates, Lane 3: human 293T whole cell lysates, Lane 4: human Raji whole cell lysates, Lane 5: rat thymus tissue lysates, Lane 6: rat lung tissue lysates, Lane 7: mouse thymus tissue lysates, Lane 8: mouse lung tissue lysates. After electrophoresis, proteins were transferred to a nitrocellulose membrane at 150 mA for 50-90 minutes. Blocked the membrane with 5% non-fat milk/TBS for 1.5 hour at RT. The membrane was incubated with rabbit anti-LAMP3 antigen affinity purified polyclonal antibody (A09406-3) at 1:1000 overnight at 4°C, then washed with TBS-0.1%Tween 3 times with 5 minutes each and probed with a goat anti-rabbit IgG-HRP secondary antibody at a dilution of 1:5000 for 1.5 hour at RT. The signal is developed using an ECL Plus Western Blotting Substrate (Catalog # AR1196-200) with Tanon 5200 system. A specific band was detected for LAMP3 at approximately 70 kDa. The expected band size for LAMP3 is at 44 kDa.

Submit a product review to [Biocompare.com](https://www.biocompare.com)

Submit a review of this product to [Biocompare.com](https://www.biocompare.com) to receive a \$20 Amazon.com giftcard! Your reviews help your fellow scientists make the right decisions. Thank you for your contribution.



Anti-LAMP3 Antibody

For Research Use Only. Not for use in diagnostic procedures.