

## Anti-GNL3L Antibody

Catalog Number: A09415

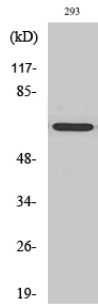
### Overview

Product Name	Anti-GNL3L Antibody
Reactive Species	Human, Mouse, Rat, Cat
Description	Boster Bio Anti-GNL3L Antibody catalog # A09415. Tested in WB, IHC, IF, ELISA applications. This antibody reacts with Human, Mouse, Rat, Cat.
Application	ELISA, IF, IHC, WB
Clonality	Polyclonal
Formulation	Liquid in PBS containing 50% glycerol, 0.5% stabilizing protein and 0.02% sodium azide. This antibody is supplied in a stabilized formulation. Compatibility with conjugation reactions depends on the chemistry of the conjugation method used. For conjugation methods that are not compatible with the stabilizing components present in this formulation, a carrier-free antibody format is required.
Storage Instructions	Store at -20°C for one year. For short term storage and frequent use, store at 4°C for up to one month. Avoid repeated freeze-thaw cycles.
Host	Rabbit
Uniprot ID	Q9NVN8

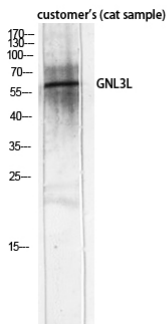
### Technical Details

Immunogen	The antiserum was produced against synthesized peptide derived from human GNL3L. AA range:71-120
Cross Reactivity	No cross reactivity with other proteins.
Isotype	IgG
Form	Liquid
Concentration	1 mg/ml
Purification	Immunogen affinity purified
Suggested Dilutions	WB 1:500-1:2000 IHC 1:100-1:300 ELISA 1:5000 IF 1:50-200

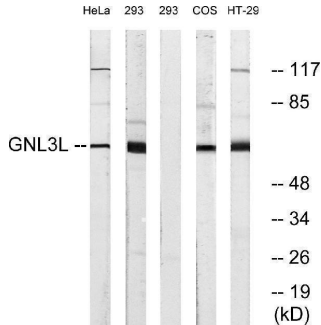
## Anti-GNL3L Antibody (A09415) Images



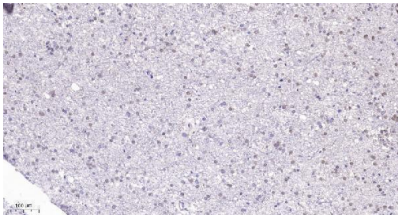
Western Blot analysis of HT29 cells using GNL3L Polyclonal Antibody diluted at 1:2000 cells nucleus extracted by Minute TM Cytoplasmic and Nuclear Fractionation kit .



Western Blot analysis of customer's (cat sample) using GNL3L Polyclonal Antibody diluted at 1:2000 cells nucleus extracted by Minute TM Cytoplasmic and Nuclear Fractionation kit .



Western blot analysis of lysates from 293, HeLa, and HT-29 cells, using GNL3L Antibody. The lane on the right is blocked with the synthesized peptide.



Immunohistochemical analysis of paraffin-embedded human brain. 1, Tris-EDTA, pH9.0 was used for antigen retrieval. 2 Antibody was diluted at 1:200 (4° overnight). 3, Secondary antibody was diluted at 1:200 (room temperature, 45min).

Submit a product review to [Biocompare.com](https://www.biocompare.com)

Submit a review of this product to [Biocompare.com](https://www.biocompare.com) to receive a \$20 Amazon.com giftcard! Your reviews help your fellow scientists make the right decisions. Thank you for your contribution.



Anti-GNL3L Antibody

For Research Use Only. Not for use in diagnostic procedures.