

Anti-REPS1 Antibody

Catalog Number: A09419

About REPS1

May coordinate the cellular actions of activated EGF receptors and Ral-GTPases By similarity.

Mungall A.J., Nature 425:805-811(2003).

Mural R.J., Submitted (SEP-2005) to the EMBL/GenBank/DDBJ databases.

Kimura K., Genome Res. 16:55-65(2006).

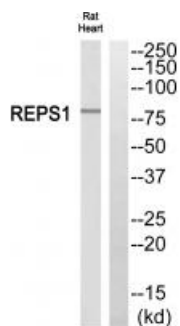
Overview

Product Name	Anti-REPS1 Antibody
Reactive Species	Human, Rat
Description	Boster Bio Anti-REPS1 Antibody (Catalog # A09419). Tested in WB applications. This antibody reacts with Human, Rat.
Application	WB
Clonality	Polyclonal
Formulation	Rabbit IgG in phosphate buffered saline (without Mg ²⁺ and Ca ²⁺), pH 7.4, 150mM NaCl, 0.02% sodium azide and 50% glycerol.
Storage Instructions	Store at -20°C for one year. For short term storage and frequent use, store at 4°C for up to one month. Avoid repeated freeze-thaw cycles.
Host	Rabbit
Uniprot ID	Q96D71

Technical Details

Immunogen	Synthesized peptide derived from C-terminal of human REPS1.
Predicted Reactive Species	Chimpanzee, Drosophila, Macaque
Isotype	IgG
Form	Liquid
Concentration	1 mg/ml
Purification	The antibody was affinity-purified from rabbit antiserum by affinity-chromatography using epitope-specific immunogen.
Suggested Dilutions	Western blotting: 1:500~1:3000

Anti-REPS1 Antibody (A09419) Images



Western blot analysis of extracts from rat heart cells, using REPS1 antibody A09419.

Submit a product review to Biocompare.com

Submit a review of this product to Biocompare.com to receive a \$20 Amazon.com giftcard! Your reviews help your fellow scientists make the right decisions. Thank you for your contribution.



Anti-REPS1 Antibody