

Anti-IQSEC2 Antibody

Catalog Number: A09440

About IQSEC2

ADP ribosylation factors (Arfs) are small GTP-binding proteins known for their role in vesicular transport, where they nucleate the assembly of coat protein complexes at sites of carrier vesicle formation. Similar to the related protein IQSEC1, IQSEC2 is a guanine nucleotide exchange protein for ARF1 and ARF6 that belongs to the BRAG family and contains one IQ domain, one PH domain and one SEC7 domain (1,2). IQSEC2 is a major component of the postsynaptic density (PSD) and colocalizes with PSD-95. It has been suggested to modulate the functions of the ARF proteins (1). Mutations in this gene have been implicated in nonsyndromic X-linked mental retardation (3).

Overview

Product Name	Anti-IQSEC2 Antibody
Reactive Species	Human, Mouse, Rat
Description	Boster Bio Anti-IQSEC2 Antibody (Catalog # A09440). Tested in ELISA, WB, IHC-P applications. This antibody reacts with Human, Mouse, Rat.
Application	ELISA, IHC-P, WB
Clonality	Polyclonal
Formulation	IQSEC2 antibody is supplied in PBS containing 0.02% sodium azide.
Storage Instructions	IQSEC2 antibody can be stored at 4°C for three months and -20°C, stable for up to one year.
Host	Rabbit
Uniprot ID	Q5JU85

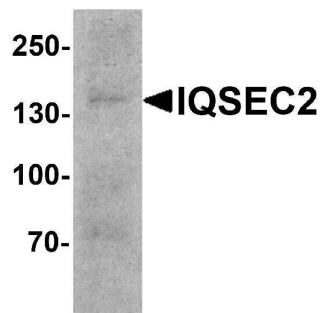
Technical Details

Immunogen	IQSEC2 antibody was raised against an 18 amino acid peptide near the carboxy terminus of human IQSEC2. The immunogen is located within amino acids 1380 - 1430 of IQSEC2.
Predicted Reactive Species	Bovine
Cross Reactivity	IQSEC2 antibody is human, mouse and rat reactive. At least two isoforms of IQSEC2 are known to exist; this antibody will only detect the larger isoform. IQSEC2 antibody is predicted to not cross-react with IQSEC1.
Isotype	IgG
Form	Liquid
Concentration	1 mg/mL
Purification	IQSEC2 antibody is affinity chromatography purified via peptide column.

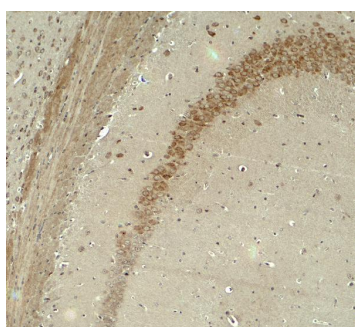
Suggested Dilutions

IQSEC2 antibody can be used for detection of IQSEC2 by Western blot at 1 - 2 ug/ml. Antibody can also be used for immunohistochemistry starting at 5 ug/mL.
Antibody validated: Western Blot in human samples and Immunohistochemistry in mouse samples. All other applications and species not yet tested. Optimal dilutions for each application should be determined by the researcher.

Anti-IQSEC2 Antibody (A09440) Images



Western blot analysis of IQSEC2 in SK-N-SH cell lysate with IQSEC2 antibody at 1 ug/ml.



Immunohistochemistry of IQSEC2 in mouse brain tissue with IQSEC2 antibody at 5 ug/ml.

Submit a product review to [Biocompare.com](https://www.biocompare.com)

Submit a review of this product to [Biocompare.com](https://www.biocompare.com) to receive a \$20 Amazon.com giftcard! Your reviews help your fellow scientists make the right decisions. Thank you for your contribution.



Anti-IQSEC2 Antibody

For Research Use Only. Not for use in diagnostic procedures.