

## Anti-Importin subunit alpha-6 KPNA5 Antibody

Catalog Number: A09441

### About KPNA5

Karyopherin, a cytosolic and heterodimeric protein complex consisting of alpha and beta subunits, is responsible for targeting proteins with nuclear localization signals to the nuclear pore complex (NPC) by an energy requiring, Ran-dependent mechanism. The alpha subunit and imported substrate enter the nucleus and accumulate in the nucleoplasm, while the beta subunit accumulates at the NPC. KPNA5 belongs to a subfamily within the KPNA family that also includes KPNA4 and 6 and is thought to be involved in NLS-dependent protein import into the nucleus.

### Overview

Product Name	Anti-Importin subunit alpha-6 KPNA5 Antibody
Reactive Species	Human
Description	Boster Bio Anti-Importin subunit alpha-6 KPNA5 Antibody (Catalog # A09441). Tested in ELISA, IHC-P applications. This antibody reacts with Human.
Application	ELISA, IHC-P
Clonality	Polyclonal Clone: SK7
Formulation	KPNA5 Antibody is supplied in PBS containing 0.02% sodium azide.
Storage Instructions	KPNA5 antibody can be stored at 4°C for three months and -20°C, stable for up to one year. Avoid repeated freeze-thaw cycles. Antibodies should not be exposed to prolonged high temperatures.
Host	Rabbit
Uniprot ID	O15131

### Technical Details

Immunogen	KPNA5 antibody was raised against a 16 amino acid synthetic peptide near the amino terminus of human KPNA5. The immunogen is located within amino acids 30 - 80 of KPNA5.
Predicted Reactive Species	Rat
Cross Reactivity	KPNA5 antibody is human specific. KPNA5 antibody is predicted to not cross-react with other Importin alpha family members.
Isotype	IgG
Form	Liquid
Concentration	1 mg/mL
Purification	KPNA5 Antibody is affinity chromatography purified via peptide column.

**Suggested Dilutions**

Dilute the sample so that the expected range of concentrations fall within the detection range of this kit.

If the expected range of concentration is unknown, a pilot test should be conducted to decide the optimal dilution ratio for your samples.

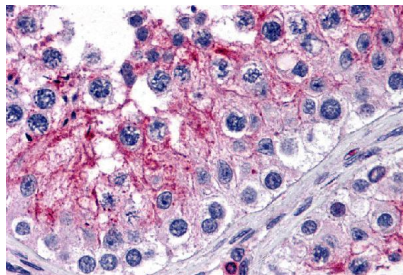
Some PubMed article(s) citing the expression level of this target are as follows:

Boster Bio's internal QC testing used:

KPNA5 antibody can be used for detection of KPNA5 by immunohistochemistry at 5 ug/mL.

Antibody validated: Immunohistochemistry in human samples. All other applications and species not yet tested. Optimal dilutions for each application should be determined by the researcher.

## Anti-Importin subunit alpha-6 KPNA5 Antibody (A09441) Images



Immunohistochemistry of KPNA5 in human testis tissue with KPNA5 antibody at 5 ug/mL.

## Submit a product review to Biocompare.com

Submit a review of this product to Biocompare.com to receive a \$20 Amazon.com giftcard! Your reviews help your fellow scientists make the right decisions. Thank you for your contribution.



Anti-Importin subunit alpha-6 KPNA5 Antibody