

Anti-Importin subunit alpha-6 KPNA5 Antibody

Catalog Number: A09441-1

About KPNA5

Karyopherin, a cytosolic and heterodimeric protein complex consisting of alpha and beta subunits, is responsible for targeting proteins with nuclear localization signals to the nuclear pore complex (NPC) by an energy requiring, Ran-dependent mechanism. The alpha subunit and imported substrate enter the nucleus and accumulate in the nucleoplasm, while the beta subunit accumulates at the NPC. KPNA5 belongs to a subfamily within the KPNA family that also includes KPNA4 and 6 and is thought to be involved in NLS-dependent protein import into the nucleus.

Overview

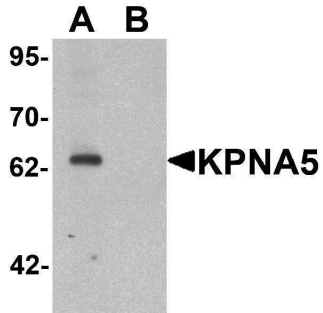
Product Name	Anti-Importin subunit alpha-6 KPNA5 Antibody
Reactive Species	Human, Mouse
Description	Boster Bio Anti-Importin subunit alpha-6 KPNA5 Antibody (Catalog # A09441-1). Tested in ELISA, WB, ICC, IF applications. This antibody reacts with Human, Mouse.
Application	ELISA, IF, ICC, WB
Clonality	Polyclonal
Formulation	KPNA5 Antibody is supplied in PBS containing 0.02% sodium azide.
Storage Instructions	KPNA5 antibody can be stored at 4°C for three months and -20°C, stable for up to one year. Avoid repeated freeze-thaw cycles. Antibodies should not be exposed to prolonged high temperatures.
Host	Rabbit
Uniprot ID	O15131

Technical Details

Immunogen	KPNA5 antibody was raised against an 18 amino acid synthetic peptide near the amino terminus of human KPNA5. The immunogen is located within amino acids 50 - 100 of KPNA5.
Predicted Reactive Species	Rat
Cross Reactivity	KPNA5 antibody is predicted to not cross-react with other Importin alpha family members.
Isotype	IgG
Form	Liquid
Concentration	1 mg/mL
Purification	KPNA5 Antibody is affinity chromatography purified via peptide column.
Suggested Dilutions	KPNA5 antibody can be used for detection of EPAC1 by Western blot at 1 ug/mL. Antibody can also

be used for immunocytochemistry starting at 5 ug/mL. For immunofluorescence start at 5 ug/mL. Antibody validated: Western Blot in mouse samples; Immunocytochemistry in mouse samples and Immunofluorescence in mouse samples. All other applications and species not yet tested. Optimal dilutions for each application should be determined by the researcher.

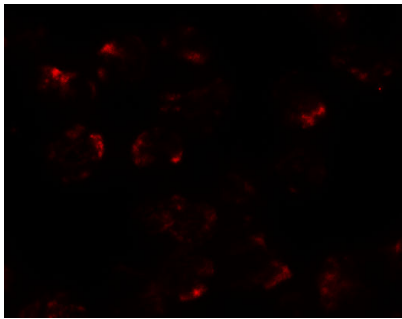
Anti-Importin subunit alpha-6 KPNA5 Antibody (A09441-1) Images



Western blot analysis of KPNA5 in EL4 cell lysate with KPNA5 antibody at 1 ug/mL in (A) the absence and (B) the presence of blocking peptide.



Immunocytochemistry of KPNA5 in EL4 cells with KPNA5 antibody at 5 ug/mL.



Immunofluorescence of KPNA5 in EL4 cells with KPNA5 antibody at 20 ug/mL.

Submit a product review to Biocompare.com

Submit a review of this product to Biocompare.com to receive a \$20 Amazon.com giftcard! Your reviews help your fellow scientists make the right decisions. Thank you for your contribution.



Anti-Importin subunit alpha-6 KPNA5 Antibody

For Research Use Only. Not for use in diagnostic procedures.