

Anti-SLC25A6 (R155) Antibody

Catalog Number: A09457-1

About SLC25A6

Catalyzes the exchange of cytoplasmic ADP with mitochondrial ATP across the mitochondrial inner membrane. May participate in the formation of the permeability transition pore complex (PTPC) responsible for the release of mitochondrial products that triggers apoptosis.

Cozens A.L., J. Mol. Biol. 206:261-280(1989).

Zhou J., Submitted (JUL-2000) to the EMBL/GenBank/DDBJ databases.

Houldsworth J., Proc. Natl. Acad. Sci. U.S.A. 85:377-381(1988).

Overview

Product Name	Anti-SLC25A6 (R155) Antibody
Reactive Species	Human, Mouse, Rat
Description	Boster Bio Anti-SLC25A6 (R155) Antibody catalog # A09457-1. Tested in WB,IHC applications. This antibody reacts with Human,Mouse,Rat.
Application	IHC, WB
Clonality	Polyclonal
Formulation	Rabbit IgG, 1mg/ml in PBS with 0.02% sodium azide, 50% glycerol, pH7.2
Storage Instructions	Store at -20°C for one year. For short term storage and frequent use, store at 4°C for up to one month. Avoid repeated freeze-thaw cycles.
Host	Rabbit
Uniprot ID	P12236

Technical Details

Immunogen	Synthesized peptide derived from internal of human SLC25A6.
Predicted Reactive Species	Chimpanzee, Drosophila, Macaque
Isotype	IgG
Form	Liquid
Concentration	1 mg/ml
Purification	The antibody was affinity-purified from rabbit antiserum by affinity-chromatography using epitope-specific immunogen and the purity is > 95% (by SDS-PAGE).

Suggested Dilutions

Dilute the sample so that the expected range of concentrations fall within the detection range of this kit.

If the expected range of concentration is unknown, a pilot test should be conducted to decide the optimal dilution ratio for your samples.

Some PubMed article(s) citing the expression level of this target are as follows:

Boster Bio's internal QC testing used:

WB: 1:500-1:1000

IHC: 1:50-1:200

Anti-SLC25A6 (R155) Antibody (A09457-1) Images

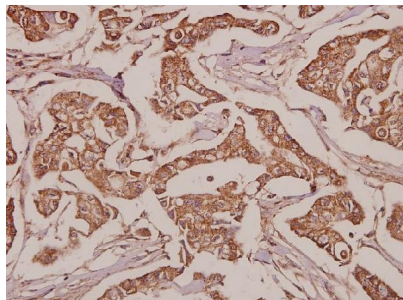


Figure 2. Immunohistochemistry validation of SLC25A6 using Anti-SLC25A6 (R155) Antibody (A09457-1).

Immunohistochemistry (IHC) analyzes of SLC25A6 (R155) pAb in paraffin-embedded human breast carcinoma tissue at 1:50.

For more protocol information of IHC

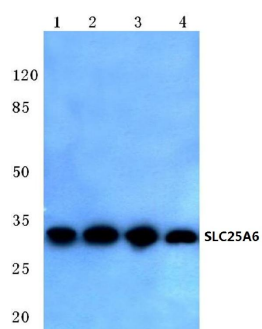


Figure 1. Western blotting validation for Anti-SLC25A6 (R155) Antibody A09457-1

Western blot (WB) analysis of SLC25A6 (R155) pAb at 1:1000 dilution

Lane1:H1792 whole cell lysate(40ug)

Lane2:HepG2 whole cell lysate(40ug)

Lane3:The Testis tissue lysate of Mouse(40ug)

Lane4:The Testis tissue lysate of Rat(40ug)

Lane5:HEK293T whole cell lysate(20ug)

Electrophoresis was performed on a SDS-PAGE gel. To determine SDS-PAGE gel concentration

Submit a product review to Biocompare.com

Submit a review of this product to Biocompare.com to receive a \$20 Amazon.com giftcard! Your reviews help your fellow scientists make the right decisions. Thank you for your contribution.



Anti-SLC25A6 (R155) Antibody