

Anti-RAB11FIP3 Antibody

Catalog Number: A09469-1

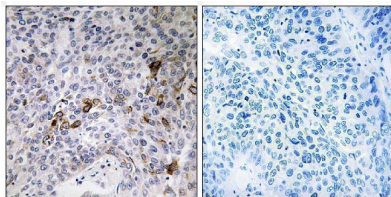
Overview

Product Name	Anti-RAB11FIP3 Antibody
Reactive Species	Human, Mouse, Rat
Description	Boster Bio Anti-RAB11FIP3 Antibody (Catalog# A09469-1). Tested in IHC, ICC, IF, ELISA applications. This antibody reacts with Human, Mouse, Rat.
Application	ELISA, IF, IHC, ICC
Clonality	Polyclonal
Formulation	PBS containing 50% glycerol, 0.5% stabilizing protein and 0.02% sodium azide. This antibody is supplied in a stabilized formulation. Compatibility with conjugation reactions depends on the chemistry of the conjugation method used. For conjugation methods that are not compatible with the stabilizing components present in this formulation, a carrier-free antibody format is required.
Storage Instructions	Store at -20°C for one year. For short-term storage and frequent use, store at 4°C for up to one month. Avoid repeated freeze-thaw cycles.
Host	Rabbit
Uniprot ID	O75154

Technical Details

Immunogen	A peptide derived from human RAB11FIP3. Immunogen sequence location: 569 - 618
Isotype	Rabbit IgG
Form	Liquid
Concentration	0.5-1mg/ml, actual concentration vary by lot. Use suggested dilution ratio to decide dilution procedure.
Purification	The antibody was purified from rabbit antiserum by affinity-chromatography using immunogen.
Suggested Dilutions	IHC 1:100 - 1:300. ELISA: 1:10000. ICC/IF 1:50-200

Anti-RAB11FIP3 Antibody (A09469-1) Images



Immunohistochemistry analysis of paraffin-embedded human lung carcinoma tissue, using RAB11FIP3 Antibody. The picture on the right is blocked with the synthesized peptide.

Submit a product review to Biocompare.com

Submit a review of this product to Biocompare.com to receive a \$20 Amazon.com giftcard! Your reviews help your fellow scientists make the right decisions. Thank you for your contribution.



Anti-RAB11FIP3 Antibody

For Research Use Only. Not for use in diagnostic procedures.