

Anti-Protein TESPA1 TESPA1 Antibody

Catalog Number: A09477

About TESPA1

TESPA1 is a critical component of the TCR signalosome and is essential for T cell selection and maturation through the regulation of TCR signaling during T cell development (1). TESPA1 encodes a protein of 458 amino acids and is highly conserved among vertebrate species (2). TESPA1 expression was tightly regulated during T cell development, with highest expression at the DP stage (3). TESPA1 deficiency resulted in failure of positive selection and substantially fewer of CD4+ and CD8+ SP cells in the thymus (1,4).

Overview

Product Name	Anti-Protein TESPA1 TESPA1 Antibody
Reactive Species	Human
Description	Boster Bio Anti-Protein TESPA1 TESPA1 Antibody (Catalog # A09477). Tested in ELISA, WB, ICC, IF applications. This antibody reacts with Human.
Application	ELISA, IF, ICC, WB
Clonality	Polyclonal
Formulation	TESPA1 antibody is supplied in PBS containing 0.02% sodium azide.
Storage Instructions	TESPA1 antibody can be stored at 4°C for three months and -20°C, stable for up to one year.
Host	Rabbit
Uniprot ID	A2RU30

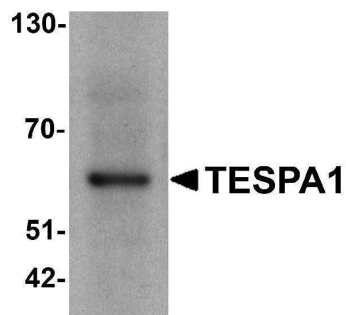
Technical Details

Immunogen	TESPA1 antibody was raised against an 18 amino acid peptide near the amino terminus of human TESPA1. The immunogen is located within amino acids 20 - 70 of TESPA1.
Predicted Reactive Species	Mouse
Cross Reactivity	TESPA1 antibody is human specific. At least three isoforms TESPA1 are known to exist.
Isotype	IgG
Form	Liquid
Concentration	1 mg/mL
Purification	TESPA1 antibody is affinity chromatography purified via peptide column.
Suggested Dilutions	TESPA1 antibody can be used for detection of TESPA1 by Western blot at 1 - 2 ug/ml. Antibody can also be used for Immunocytochemistry starting at 5 ug/mL. For immunofluorescence start at 20

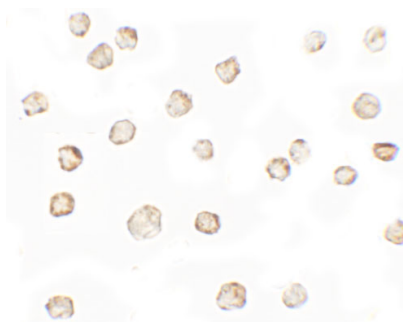
ug/mL.

Antibody validated: Western Blot in human samples; Immunocytochemistry in human samples and Immunofluorescence in human samples. All other applications and species not yet tested. Optimal dilutions for each application should be determined by the researcher.

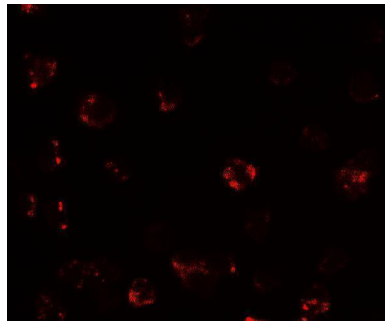
Anti-Protein TESPA1 TESPA1 Antibody (A09477) Images



Western blot analysis of TESPA1 in A431 cell lysate with TESPA1 antibody at 1 ug/ml.



Immunocytochemistry of TESPA1 in A431 cells with TESPA1 antibody at 5 ug/mL.



Immunofluorescence of TESPA1 in A431 cells with TESPA1 antibody at 20 ug/mL.

Submit a product review to [Biocompare.com](https://www.biocompare.com)

Submit a review of this product to [Biocompare.com](https://www.biocompare.com) to receive a \$20 Amazon.com giftcard! Your reviews help your fellow scientists make the right decisions. Thank you for your contribution.



Anti-Protein TESPA1 TESPA1 Antibody

For Research Use Only. Not for use in diagnostic procedures.