

Anti-Placenta-specific protein 1 PLAC1 Antibody

Catalog Number: A09488

About PLAC1

PLAC1 was initially identified as a protein expressed specifically in the placenta and other cells derived from the trophoblast lineage during embryonic development, but has also been found to be expressed ectopically in a wide range of human malignancies, particularly breast cancers. PLAC1 is a membrane-associated protein that is thought to serve a receptor-like function modulating cell-cell or ligand receptor interactions unique to the maternal-placental interface. Decreased expression of PLAC1 is associated with decreased expression of cyclin D1 and reduced expression of AKT kinase, which, combined with the fact that PLAC1 is expressed on the surface of cancer cells, suggests that PLAC1 may be an effective candidate for immunotherapeutic treatments of cancer.

Overview

Product Name	Anti-Placenta-specific protein 1 PLAC1 Antibody
Reactive Species	Human
Description	Boster Bio Anti-Placenta-specific protein 1 PLAC1 Antibody (Catalog # A09488). Tested in ELISA, WB, ICC, IF applications. This antibody reacts with Human.
Application	ELISA, IF, ICC, WB
Clonality	Polyclonal
Formulation	PLAC1 Antibody is supplied in PBS containing 0.02% sodium azide.
Storage Instructions	PLAC1 antibody can be stored at 4°C for three months and -20°C, stable for up to one year. Avoid repeated freeze-thaw cycles. Antibodies should not be exposed to prolonged high temperatures.
Host	Rabbit
Uniprot ID	Q9HBJ0

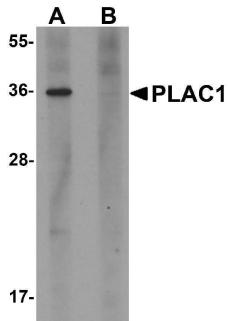
Technical Details

Immunogen	PLAC1 antibody was raised against a 15 amino acid synthetic peptide near the carboxy terminus of human PLAC1. The immunogen is located within amino acids 130 - 180 of PLAC1.
Predicted Reactive Species	Chicken
Isotype	IgG
Form	Liquid
Concentration	1 mg/mL
Purification	PLAC1 Antibody is affinity chromatography purified via peptide column.

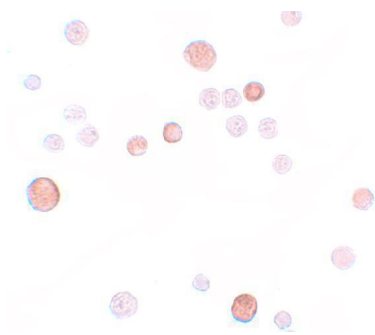
Suggested Dilutions

PLAC1 antibody can be used for detection of PLAC1 by Western blot at 1 ug/mL. Antibody can also be used for immunocytochemistry starting at 10 ug/mL. For immunofluorescence start at 20 ug/mL. Antibody validated: Western Blot in human samples; Immunocytochemistry in human samples and Immunofluorescence in human samples. All other applications and species not yet tested. Optimal dilutions for each application should be determined by the researcher.

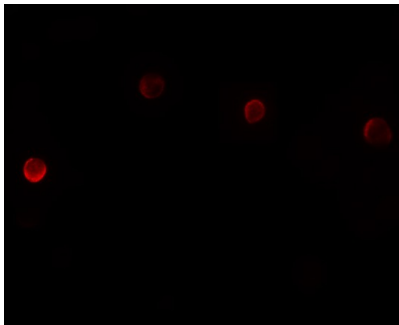
Anti-Placenta-specific protein 1 PLAC1 Antibody (A09488) Images



Western blot analysis of PLAC1 in human placenta tissue lysate with PLAC1 antibody at 1 ug/mL in (A) the absence and (B) the presence of blocking peptide.



Immunocytochemistry of PLAC1 in HeLa cells with PLAC1 antibody at 10 ug/mL.



Immunofluorescence of PLAC1 in HeLa cells with PLAC1 antibody at 20 ug/mL.

Submit a product review to [Biocompare.com](https://www.biocompare.com)

Submit a review of this product to [Biocompare.com](https://www.biocompare.com) to receive a \$20 Amazon.com giftcard! Your reviews help your fellow scientists make the right decisions. Thank you for your contribution.



Anti-Placenta-specific protein 1 PLAC1 Antibody

For Research Use Only. Not for use in diagnostic procedures.