

Anti-ApoL2 (R229) Antibody

Catalog Number: A09503

Overview

| | |
|----------------------|--------------------------------------------------------------------------------------------------------------------------------------------|
| Product Name | Anti-ApoL2 (R229) Antibody |
| Reactive Species | Human, Mouse, Rat |
| Description | Boster Bio Anti-ApoL2 (R229) Antibody catalog # A09503. Tested in IF, IHC, WB applications. This antibody reacts with Human, Mouse, Rat. |
| Application | IF, IHC, WB |
| Clonality | Polyclonal |
| Formulation | Rabbit IgG, 1mg/ml in PBS with 0.02% sodium azide, 50% glycerol, pH7.2 |
| Storage Instructions | Store at -20°C for one year. For short term storage and frequent use, store at 4°C for up to one month. Avoid repeated freeze-thaw cycles. |
| Host | Rabbit |
| Uniprot ID | Q9BQE5 |

Technical Details

| | |
|---------------------|--------------------------------------------------------------------------------------------------------------------------------------------------------------------------------------------------------------------------------------------------------------------------------------------------------------------------------------------------------------------------------------------------------------------------------------------------------------------------------------------------------------------------------------------------------------------------------------------------------------------------|
| Form | Liquid |
| Purification | The antibody was affinity-purified from rabbit antiserum by affinity-chromatography using epitope-specific immunogen and the purity is > 95% (by SDS-PAGE). |
| Suggested Dilutions | <p>Dilute the sample so that the expected range of concentrations fall within the detection range of this kit.</p> <p>If the expected range of concentration is unknown, a pilot test should be conducted to decide the optimal dilution ratio for your samples.</p> <p>Some PubMed article(s) citing the expression level of this target are as follows: Boster Bio's internal QC testing used WB: 1:500~1:1000 IHC: 1:50~1:200 IF: 1:50~1:200</p> <p>For protocols, please visit https://www.bosterbio.com/protocol-and-troubleshooting/</p> |

Anti-ApoL2 (R229) Antibody (A09503) Images

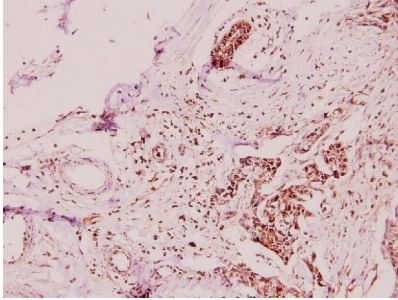


Figure 2. Immunohistochemistry validation of APOL2 using Anti-ApoL2 (R229) Antibody (A09503).

Immunohistochemistry (IHC) analyzes of ApoL2 (R229) pAb in paraffin-embedded human breast carcinoma tissue at 1:100.

For more protocol information of IHC

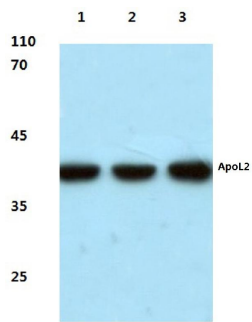


Figure 1. Western blotting validation for Anti-ApoL2 (R229) Antibody A09503

Western blot (WB) analysis of ApoL2 (R229) pAb at 1:500 dilution

Lane1:The Brain tissue lysate of Mouse(40ug)

Lane2:The Brain tissue lysate of Rat(40ug)

Lane3:PC3 whole cell lysate(40ug)

Lane4:Hela whole cell lysate(40ug)

Electrophoresis was performed on a SDS-PAGE gel. To determine SDS-PAGE gel concentration

Submit a product review to Biocompare.com

Submit a review of this product to Biocompare.com to receive a \$20 Amazon.com giftcard! Your reviews help your fellow scientists make the right decisions. Thank you for your contribution.



Anti-ApoL2 (R229) Antibody