

Anti-SCFD1 Antibody

Catalog Number: A09509-1

Overview

| | |
|----------------------|---|
| Product Name | Anti-SCFD1 Antibody |
| Reactive Species | Human, Mouse, Rat |
| Description | Boster Bio Anti-SCFD1 Antibody catalog # A09509-1. Tested in WB, IHC applications. This antibody reacts with Human, Mouse, Rat. |
| Application | IHC, WB |
| Clonality | Polyclonal |
| Formulation | Liquid in PBS containing 50% glycerol, 0.5% stabilizing protein and 0.02% sodium azide. This antibody is supplied in a stabilized formulation. Compatibility with conjugation reactions depends on the chemistry of the conjugation method used. For conjugation methods that are not compatible with the stabilizing components present in this formulation, a carrier-free antibody format is required. |
| Storage Instructions | Store at -20°C for one year. For short term storage and frequent use, store at 4°C for up to one month. Avoid repeated freeze-thaw cycles. |
| Host | Rabbit |
| Uniprot ID | Q8WVM8 |

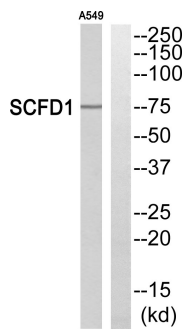
Technical Details

| | |
|---------------------|---|
| Immunogen | The antiserum was produced against synthesized peptide derived from human SCFD1. AA range:533-582 |
| Isotype | IgG |
| Form | Liquid |
| Concentration | 1 mg/ml |
| Purification | Immunogen affinity purified |
| Suggested Dilutions | WB 1:500-2000 IHC 1:50-300 |

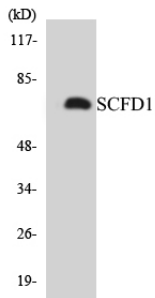
Anti-SCFD1 Antibody (A09509-1) Images



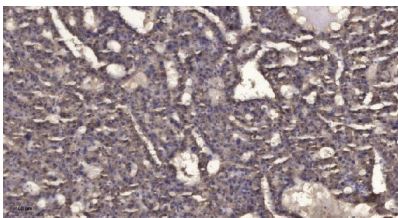
Western Blot analysis of various cells using SCFD1 Polyclonal Antibody



Western blot analysis of SCFD1 Antibody. The lane on the right is blocked with the SCFD1 peptide.



Western blot analysis of the lysates from 293 cells using SCFD1 antibody.



Immunohistochemical analysis of paraffin-embedded human liver cancer. 1, Antibody was diluted at 1:200 (4° overnight). 2, Tris-EDTA, pH9.0 was used for antigen retrieval. 3, Secondary antibody was diluted at 1:200 (room temperature, 45min).

Submit a product review to [Biocompare.com](https://www.biocompare.com)

Submit a review of this product to [Biocompare.com](https://www.biocompare.com) to receive a \$20 Amazon.com giftcard! Your reviews help your fellow scientists make the right decisions. Thank you for your contribution.



Anti-SCFD1 Antibody

For Research Use Only. Not for use in diagnostic procedures.