

Anti-Notchless protein homolog 1 NLE1 Antibody

Catalog Number: A09529-1

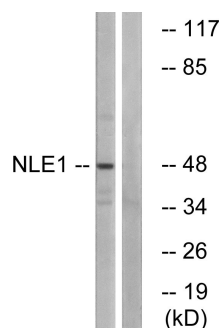
Overview

Product Name	Anti-Notchless protein homolog 1 NLE1 Antibody
Reactive Species	Human, Monkey
Description	Boster Bio Anti-Notchless protein homolog 1 NLE1 Antibody catalog # A09529-1. Tested in ELISA, IHC, WB applications. This antibody reacts with Human, Monkey.
Application	ELISA, IF, IHC, WB
Clonality	Polyclonal
Formulation	Liquid in PBS containing 50% glycerol, 0.5% stabilizing protein and 0.02% sodium azide. This antibody is supplied in a stabilized formulation. Compatibility with conjugation reactions depends on the chemistry of the conjugation method used. For conjugation methods that are not compatible with the stabilizing components present in this formulation, a carrier-free antibody format is required.
Storage Instructions	Store at -20°C for one year. For short term storage and frequent use, store at 4°C for up to one month. Avoid repeated freeze-thaw cycles.
Host	Rabbit
Uniprot ID	Q9NVX2

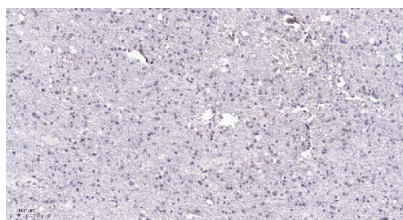
Technical Details

Immunogen	The antiserum was produced against synthesized peptide derived from human NLE1. AA range:301-350
Isotype	IgG
Form	Liquid
Concentration	1 mg/ml
Purification	The antibody was affinity-purified from rabbit antiserum by affinity-chromatography using epitope-specific immunogen.
Suggested Dilutions	WB 1:500-1:2000 IHC 1:100-1:300 ELISA 1:40000 IF 1:50-200

Anti-Notchless protein homolog 1 NLE1 Antibody (A09529-1) Images



Western blot analysis of lysates from COS cells, using NLE1 Antibody. The lane on the right is blocked with the synthesized peptide.



Immunohistochemical analysis of paraffin-embedded human brain. 1, Tris-EDTA, pH9.0 was used for antigen retrieval. 2 Antibody was diluted at 1:200 (4° overnight). 3, Secondary antibody was diluted at 1:200 (room temperature, 45min).

1 Publications Citing This Product

1. PubMed ID: 33335999, Jing M, Yi Y, Jinniu Z, Xiuli K, Jianxian W. Rehabilitation training improves nerve injuries by affecting Notch1 and SYN. Open Med (Wars). 2020 May 15; 15(1):387-395. doi:10.1515/med-2020-0045. PMID:33335999; PMCID:PMC7712290.

Visit bosterbio.com/anti-notchless-protein-homolog-1-nle1-antibody-a09529-1-boster.html to see all 1 publications.

Submit a product review to Biocompare.com

Submit a review of this product to Biocompare.com to receive a \$20 Amazon.com giftcard! Your reviews help your fellow scientists make the right decisions. Thank you for your contribution.



Anti-Notchless protein homolog 1 NLE1 Antibody

For Research Use Only. Not for use in diagnostic procedures.