

Anti-NLE1 (Y333) Antibody

Catalog Number: A09529Y333

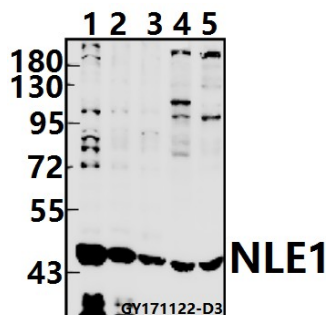
Overview

Product Name	Anti-NLE1 (Y333) Antibody
Reactive Species	Human, Mouse, Rat
Description	Boster Bio Anti-NLE1 (Y333) Antibody catalog # A09529Y333. Tested in WB applications. This antibody reacts with Human,Mouse,Rat.
Application	WB
Clonality	Polyclonal
Formulation	Rabbit IgG, 1mg/ml in PBS with 0.02% sodium azide, 50% glycerol, pH7.2
Storage Instructions	Store at -20°C for one year. For short term storage and frequent use, store at 4°C for up to one month. Avoid repeated freeze-thaw cycles.
Host	Rabbit
Uniprot ID	Q9NVX2

Technical Details

Immunogen	Synthetic peptide, corresponding to amino acids 302-350 of Human NLE1.
Isotype	IgG
Form	Liquid
Concentration	1 mg/ml
Purification	The antibody was affinity-purified from rabbit antiserum by affinity-chromatography using epitope-specific immunogen and the purity is > 95% (by SDS-PAGE).
Suggested Dilutions	WB: 1:500-1:1000

Anti-NLE1 (Y333) Antibody (A09529Y333) Images



Western blot (WB) analysis of NLE1 (Y333) pAb at 1:500 dilution Lane1:HEK293T whole cell lysate(20ug) Lane2:K562 whole cell lysate(20ug) Lane3:HCT116 whole cell lysate(20ug) Lane4:PC12 whole cell lysate(40ug) Lane5:CT26 whole cell lysate(40ug)

Submit a product review to Biocompare.com

Submit a review of this product to Biocompare.com to receive a \$20 Amazon.com giftcard! Your reviews help your fellow scientists make the right decisions. Thank you for your contribution.



Anti-NLE1 (Y333) Antibody

For Research Use Only. Not for use in diagnostic procedures.