

Anti-AP-3 complex subunit beta-2 AP3B2 Antibody

Catalog Number: A09539

About AP3B2

The AP3 complex is a heterotetramer composed of two large adaptins (AP3D1, AP3B1 or AP3B2), a medium adaptin (AP3M1 or AP3M2) and a small adaptin (AP3S1 or AP3S2). The complex is associated with the Golgi region as well as more peripheral structures. It facilitates the budding of vesicles from the Golgi membrane and may be directly involved in trafficking to lysosomes. Unlike the homologous AP3B1, AP3B2-containing AP3 complexes are preferentially targeted to neuronal processes, and mice deficient in AP3B2 displayed compromised synaptic zinc stores.

Overview

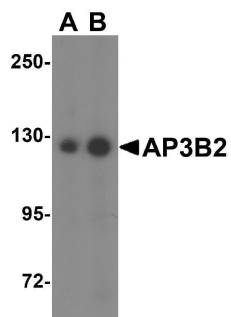
Product Name	Anti-AP-3 complex subunit beta-2 AP3B2 Antibody
Reactive Species	Human, Mouse, Rat
Description	Boster Bio Anti-AP-3 complex subunit beta-2 AP3B2 Antibody (Catalog # A09539). Tested in ELISA, WB, IHC-P, IF applications. This antibody reacts with Human, Mouse, Rat.
Application	ELISA, IF, IHC-P, WB
Clonality	Polyclonal
Formulation	AP3B2 Antibody is supplied in PBS containing 0.02% sodium azide.
Storage Instructions	Antibody can be stored at 4°C up to one year. Antibodies should not be exposed to prolonged high temperatures.
Host	Rabbit
Uniprot ID	Q13367

Technical Details

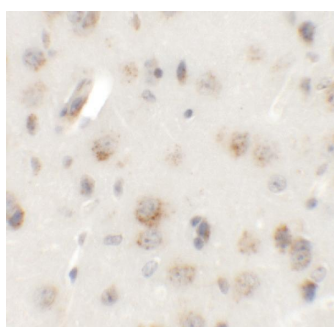
Immunogen	AP3B2 antibody was raised against an 18 amino acid synthetic peptide near the amino terminus of human AP3B2. The immunogen is located within the first 50 amino acids of AP3B2.
Predicted Reactive Species	Bovine
Isotype	IgG
Form	Liquid
Concentration	1 mg/mL
Purification	AP3B2 Antibody is affinity chromatography purified via peptide column.
Suggested Dilutions	AP3B2 antibody can be used for detection of AP3B2 by Western blot at 1 - 2 ug/mL. Antibody can also be used for immunohistochemistry starting at 5 ug/mL. For immunofluorescence start at 20 ug/mL.

Antibody validated: Western Blot in mouse and rat samples; Immunohistochemistry in mouse samples and Immunofluorescence in mouse samples. All other applications and species not yet tested. Optimal dilutions for each application should be determined by the researcher.

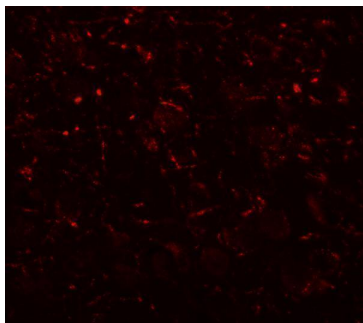
Anti-AP-3 complex subunit beta-2 AP3B2 Antibody (A09539) Images



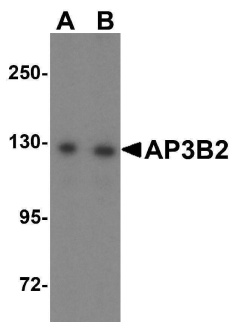
Western blot analysis of AP3B2 in rat brain tissue lysate with AP3B2 antibody at (A) 1 and (B) 2 ug/mL.



Immunohistochemistry of AP3B2 in mouse brain tissue with AP3B2 antibody at 5 ug/mL.



Immunofluorescence of AP3B2 in mouse brain tissue with AP3B2 antibody at 20 ug/mL.



Western blot analysis of AP3B2 expression in mouse brain tissue lysate with AP3B2 antibody at (A) 1 and (B) 2 ug/ml.

Submit a product review to [Biocompare.com](https://www.biocompare.com)

Submit a review of this product to [Biocompare.com](https://www.biocompare.com) to receive a \$20 Amazon.com giftcard! Your reviews help your fellow scientists make the right decisions. Thank you for your contribution.



Anti-AP-3 complex subunit beta-2 AP3B2 Antibody

For Research Use Only. Not for use in diagnostic procedures.