

Anti-TEM5 ADGRA2 Antibody

Catalog Number: A09540

About GPR124

Tumor endothelial markers (TEMs) are significantly up-regulated during angiogenesis and neoangiogenesis that are crucial for the growth of solid tumors. TEMs localized on the cell surface and conserved across species are of particular interest for future development of anti-angiogenic therapies. These include TEMs such as TEM1, TEM5, TEM7 and TEM8. TEM5 is a member of the adhesion family of G protein coupled receptors and is localized on the surface of endothelial cells. TEM5 is a seven-pass transmembrane receptor, unlike TEM1, TEM7 and TEM8 which span the membrane once. TEM5 is abundantly expressed in tumor vessels, heart, placenta, ovary, small intestine, and colon. Proteolytically processed soluble TEM5 mediates endothelial cell survival during angiogenesis by linking integrin to glycosaminoglycans.

Overview

Product Name	Anti-TEM5 ADGRA2 Antibody
Reactive Species	Human, Rat
Description	Boster Bio Anti-TEM5 ADGRA2 Antibody (Catalog # A09540). Tested in ELISA, WB, IHC-P applications. This antibody reacts with Human, Rat.
Application	ELISA, IHC-P, WB
Clonality	Polyclonal
Formulation	TEM5 Antibody is supplied in PBS containing 0.02% sodium azide.
Storage Instructions	TEM5 antibody can be stored at 4°C for three months and -20°C, stable for up to one year. Avoid repeated freeze-thaw cycles. Antibodies should not be exposed to prolonged high temperatures.
Host	Rabbit
Uniprot ID	Q96PE1

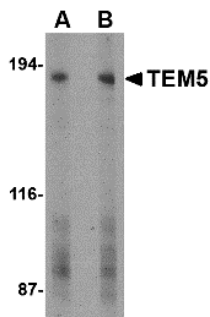
Technical Details

Immunogen	TEM5 antibody was raised against a 15 amino acid synthetic peptide near the carboxy terminus of the human TEM5. The immunogen is located within amino acids 1270 - 1320 of TEM5.
Predicted Reactive Species	Mouse
Isotype	IgG
Form	Liquid
Concentration	1 mg/mL
Purification	TEM5 Antibody is affinity chromatography purified via peptide column.

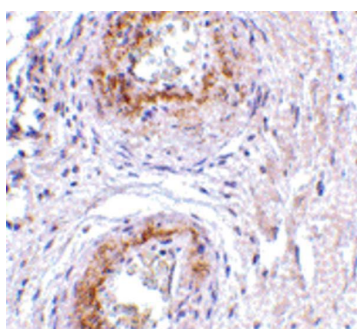
Suggested Dilutions

TEM5 antibody can be used for detection of TEM5 by Western blot at 2 and 4 ug/mL. Antibody can also be used for immunohistochemistry starting at 5 ug/mL.
Antibody validated: Western Blot in human samples and Immunohistochemistry in human samples.
All other applications and species not yet tested. Optimal dilutions for each application should be determined by the researcher.

Anti-TEM5 ADGRA2 Antibody (A09540) Images



Western blot analysis of TEM5 in human bladder tissue lysate with TEM5 antibody at (A) 2 and (B) 4 ug/mL.



Immunohistochemistry of TEM5 in human bladder tissue with TEM5 antibody at 5 ug/mL.

Submit a product review to [Biocompare.com](https://www.biocompare.com)

Submit a review of this product to [Biocompare.com](https://www.biocompare.com) to receive a \$20 Amazon.com giftcard! Your reviews help your fellow scientists make the right decisions. Thank you for your contribution.



Anti-TEM5 ADGRA2 Antibody

For Research Use Only. Not for use in diagnostic procedures.