

Anti-CTRP1 C1QTNF1 Antibody

Catalog Number: A09550-1

About C1QTNF1

Adipose tissue of an organism plays a major role in regulating physiologic and pathologic processes such as metabolism and immunity by producing and secreting a variety of bioactive molecules termed adipokines. One highly conserved family of adipokines is adiponectin/ACRP30 and its structural and functional paralogs, the C1q/tumor necrosis factor- α -related proteins (CTRPs) 1-7. Unlike adiponectin, which is expressed exclusively by differentiated adipocytes, the CTRPs are expressed in a wide variety of tissues. These proteins are thought to act mainly on liver and muscle tissue to control glucose and lipid metabolism. An analysis of the crystal structure of adiponectin revealed a structural and evolutionary link between TNF and C1q-containing proteins, suggesting that these proteins arose from a common ancestral innate immunity gene. In obese (*ob/ob*) mice, RT-PCR analysis showed that mCTRP1 transcripts are seen at substantially higher levels in adipose tissues compared to those of normal mice.

Overview

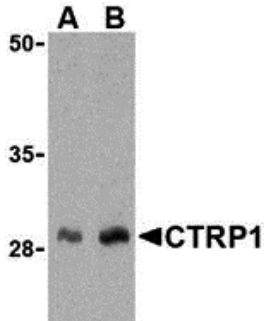
Product Name	Anti-CTRP1 C1QTNF1 Antibody
Reactive Species	Human, Mouse, Rat
Description	Boster Bio Anti-CTRP1 C1QTNF1 Antibody (Catalog # A09550-1). Tested in ELISA, WB, IHC-P, IF applications. This antibody reacts with Human, Mouse, Rat.
Application	ELISA, IF, IHC-P, WB
Clonality	Polyclonal
Formulation	CTRP1 Antibody is supplied in PBS containing 0.02% sodium azide.
Storage Instructions	CTRP1 antibody can be stored at 4°C for three months and -20°C, stable for up to one year. Avoid repeated freeze-thaw cycles. Antibodies should not be exposed to prolonged high temperatures.
Host	Rabbit
Uniprot ID	Q9BXJ1

Technical Details

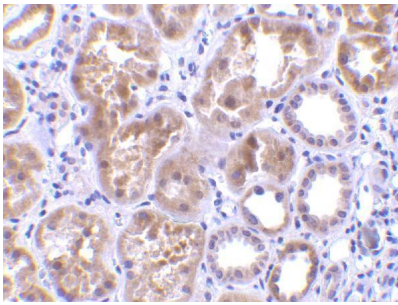
Immunogen	CTRP1 (NT) antibody was raised against a 15 amino acid synthetic peptide from near the amino-terminus of human CTRP1. The immunogen is located within amino acids 40 - 90 of CTRP1.
Predicted Reactive Species	Chicken, Rat
Cross Reactivity	These proteins are often highly modified post-translationally and migrate in SDS-PAGE at positions other than their predicted size.
Isotype	IgG
Form	Liquid

Concentration	1 mg/mL
Purification	CTRP1 Antibody is affinity chromatography purified via peptide column.
Suggested Dilutions	<p>CTRP1 antibody can be used for the detection of CTRP1 by Western blot at 1 and 2 ug/mL. Antibody can also be used for immunohistochemistry starting at 10 ug/mL. For immunofluorescence start at 20 ug/mL.</p> <p>Antibody validated: Western Blot in human samples; Immunohistochemistry in human samples and Immunofluorescence in human samples. All other applications and species not yet tested. Optimal dilutions for each application should be determined by the researcher.</p>

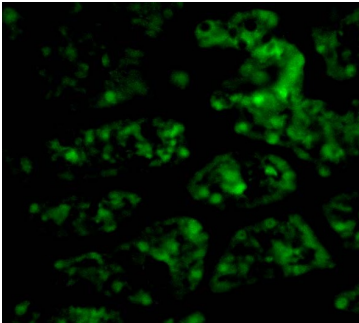
Anti-CTRP1 C1QTNF1 Antibody (A09550-1) Images



Western blot analysis of CTRP1 in human kidney cell lysate with CTRP1 antibody at (A) 1 and (B) 2 ug/mL.



Immunohistochemistry of CTRP1 in human kidney tissue with CTRP1 antibody at 10 ug/mL.



Immunofluorescence of CTRP1 in Human Kidney cells with CTRP1 antibody at 20 ug/mL.

Submit a product review to [Biocompare.com](https://www.biocompare.com)

Submit a review of this product to [Biocompare.com](https://www.biocompare.com) to receive a \$20 Amazon.com giftcard! Your reviews help your fellow scientists make the right decisions. Thank you for your contribution.



Anti-CTRP1 C1QTNF1 Antibody

For Research Use Only. Not for use in diagnostic procedures.