

## Anti-SIDT2 Antibody

Catalog Number: A09551

### About SIDT2

The SID1 transmembrane family member (SIDT2) is a highly glycosylated, multipass transmembrane protein that localizes to the lysosomal membrane. SIDT2 is highly expressed in liver, brain and kidney, with no or little expression in skeletal muscles, heart or other tissues. Little is known of the function of SIDT2.

### Overview

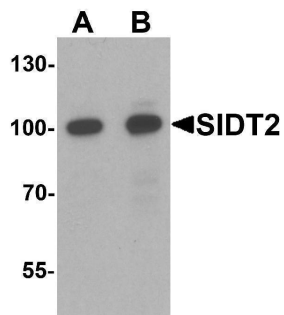
Product Name	Anti-SIDT2 Antibody
Reactive Species	Human, Mouse, Rat
Description	Boster Bio Anti-SIDT2 Antibody (Catalog # A09551). Tested in ELISA, WB applications. This antibody reacts with Human, Mouse, Rat.
Application	ELISA, WB
Clonality	Polyclonal
Formulation	SIDT2 Antibody is supplied in PBS containing 0.02% sodium azide.
Storage Instructions	SIDT2 antibody can be stored at 4°C for three months and -20°C, stable for up to one year.
Host	Rabbit
Uniprot ID	Q8NBJ9

### Technical Details

Immunogen	Rabbit polyclonal SIDT2 antibody was raised against an 18 amino acid peptide near the amino terminus of human SIDT2. The immunogen is located within the first 50 amino acids of SIDT2.
Predicted Reactive Species	Chicken, Rat
Cross Reactivity	Multiple isoforms of SIDT2 are known to exist; this antibody is predicted to not cross-react with other members of the SID1 transmembrane family.
Isotype	IgG
Form	Liquid
Concentration	1 mg/mL
Purification	SIDT2 Antibody is affinity chromatography purified via peptide column.
Suggested Dilutions	SIDT2 antibody can be used for detection of SIDT2 by Western blot at 0.5 - 1 ug/mL. Antibody validated: Western Blot in mouse samples. All other applications and species not yet

tested. Optimal dilutions for each application should be determined by the researcher.

## Anti-SIDT2 Antibody (A09551) Images



Western blot analysis of SIDT2 in mouse brain tissue lysate with SIDT2 antibody at (A) 0.5 and (B) 1 ug/mL.

## Submit a product review to Biocompare.com

Submit a review of this product to Biocompare.com to receive a \$20 Amazon.com giftcard! Your reviews help your fellow scientists make the right decisions. Thank you for your contribution.



### Anti-SIDT2 Antibody

For Research Use Only. Not for use in diagnostic procedures.