

## Anti-STK31 Antibody

Catalog Number: A09588

### About STK31

Cadherins are calcium-dependent cell adhesion proteins. They preferentially interact with themselves in a homophilic manner in connecting cells; cadherins may thus contribute to the sorting of heterogeneous cell types.

Shimoyama Y., Biochem. J. 349:159-167(2000).

The MGC Project Team, Genome Res. 14:2121-2127(2004).

Tanihara H., Cell Adhes. Commun. 2:15-26(1994).

### Overview

|                      |                                                                                                                                            |
|----------------------|--------------------------------------------------------------------------------------------------------------------------------------------|
| Product Name         | Anti-STK31 Antibody                                                                                                                        |
| Reactive Species     | Human, Mouse, Rat                                                                                                                          |
| Description          | Boster Bio Anti-STK31 Antibody catalog # A09588. Tested in WB applications. This antibody reacts with Human,Mouse,Rat.                     |
| Application          | WB                                                                                                                                         |
| Clonality            | Polyclonal                                                                                                                                 |
| Formulation          | Rabbit IgG, 1mg/ml in PBS with 0.02% sodium azide, 50% glycerol, pH7.2                                                                     |
| Storage Instructions | Store at -20°C for one year. For short term storage and frequent use, store at 4°C for up to one month. Avoid repeated freeze-thaw cycles. |
| Host                 | Rabbit                                                                                                                                     |
| Uniprot ID           | Q9BXU1                                                                                                                                     |

### Technical Details

|                            |                                                                                                                                                             |
|----------------------------|-------------------------------------------------------------------------------------------------------------------------------------------------------------|
| Immunogen                  | Synthesized peptide derived from human T1R3                                                                                                                 |
| Predicted Reactive Species | Chimpanzee, Drosophila, Macaque                                                                                                                             |
| Isotype                    | IgG                                                                                                                                                         |
| Form                       | Liquid                                                                                                                                                      |
| Concentration              | 1 mg/ml                                                                                                                                                     |
| Purification               | The antibody was affinity-purified from rabbit antiserum by affinity-chromatography using epitope-specific immunogen and the purity is > 95% (by SDS-PAGE). |
|                            |                                                                                                                                                             |

**Suggested Dilutions**

Dilute the sample so that the expected range of concentrations fall within the detection range of this kit.

If the expected range of concentration is unknown, a pilot test should be conducted to decide the optimal dilution ratio for your samples.

Some PubMed article(s) citing the expression level of this target are as follows:

Boster Bio's internal QC testing used:

WB: 1:500-1:1000

## Anti-STK31 Antibody (A09588) Images

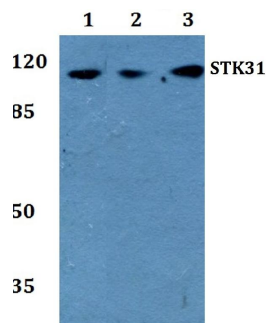


Figure 1. Western blotting validation for Anti-STK31 Antibody A09588

Western blot (WB) analysis of STK31 polyclonal antibody at 1:500 dilution

Lane1:HEK293T whole cell lysate

Lane2:sp2/0 whole cell lysate

Lane3:PC12 whole cell lysate

Electrophoresis was performed on a SDS-PAGE gel. To determine SDS-PAGE gel concentration

## Submit a product review to Biocompare.com

Submit a review of this product to Biocompare.com to receive a \$20 Amazon.com giftcard! Your reviews help your fellow scientists make the right decisions. Thank you for your contribution.



Anti-STK31 Antibody