

Anti-PEF1 Antibody Picoband®

Catalog Number: A09591-2

About PEF1

Peflin is a protein that in humans is encoded by the PEF1 gene. This gene encodes a calcium-binding protein belonging to the penta-EF-hand protein family. The encoded protein has been shown to form a heterodimer with the programmed cell death 6 gene product and may modulate its function in Ca (2+) signaling. Alternative splicing results in multiple transcript variants and a pseudogene has been identified on chromosome 1.

Overview

| | |
|----------------------|---|
| Product Name | Anti-PEF1 Antibody Picoband® |
| Reactive Species | Human, Mouse, Rat |
| Description | Boster Bio Anti-PEF1 Antibody Picoband® catalog # A09591-2. Tested in ELISA, IHC, WB applications. This antibody reacts with Human, Mouse, Rat. The brand Picoband indicates this is a premium antibody that guarantees superior quality, high affinity, and strong signals with minimal background in Western blot applications. Only our best-performing antibodies are designated as Picoband, ensuring unmatched performance. |
| Application | ELISA, IHC, WB |
| Clonality | Polyclonal |
| Formulation | Each vial contains 4mg Trehalose, 0.9mg NaCl, 0.2mg Na ₂ HPO ₄ , 0.05mg NaN ₃ . |
| Storage Instructions | Store at -20°C for one year from date of receipt. After reconstitution, at 4°C for one month. It can also be aliquotted and stored frozen at -20°C for six months. Avoid repeated freeze-thaw cycles. |
| Host | Rabbit |
| Uniprot ID | Q9UBV8 |

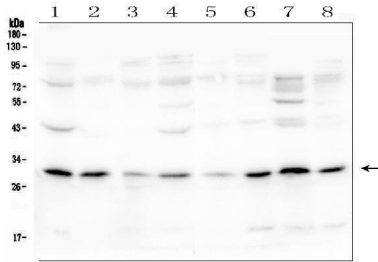
Technical Details

| | |
|-------------------------------|--|
| Immunogen | E.coli-derived human PEF1 recombinant protein (Position: R170-L284). |
| Recommended Detection Systems | Boster recommends Enhanced Chemiluminescent Kit with anti-Rabbit IgG (EK1002) for Western blot, and HRP Conjugated anti-Rabbit IgG Super Vision Assay Kit (SV0002-4) for IHC(P). |
| Cross Reactivity | No cross-reactivity with other proteins. |
| Isotype | Rabbit IgG |
| Form | Lyophilized |
| Concentration | Adding 0.2 ml of distilled water will yield a concentration of 500 ug/ml. |
| Purification | Immunogen affinity purified. |

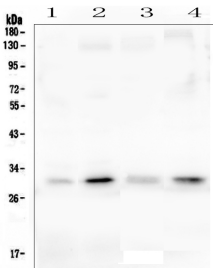
Suggested Dilutions

Western blot, 0.1-0.5ug/ml
Immunohistochemistry (Paraffin-embedded Section), 0.5-1ug/ml
ELISA, 0.1-0.5ug/ml

Anti-PEF1 Antibody Picoband® (A09591-2) Images

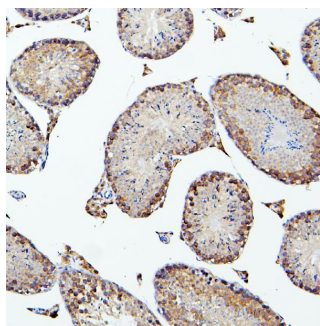


Western blot analysis of PEF1 using anti-PEF1 antibody (A09591-2). Electrophoresis was performed on a 5-20% SDS-PAGE gel at 70V (Stacking gel) / 90V (Resolving gel) for 2-3 hours. The sample well of each lane was loaded with 50ug of sample under reducing conditions. Lane 1: human HEK293 whole cell lysates Lane 2: human placenta tissue lysates Lane 3: human PC-3 whole cell lysates Lane 4: human U-87MG whole cell lysates Lane 5: human U-937 whole cell lysates Lane 6: human HepG2 whole cell lysates Lane 7: human A431 whole cell lysates Lane 8: human U2OS whole cell lysates After Electrophoresis, proteins were transferred to a Nitrocellulose membrane at 150mA for 50-90 minutes. Blocked the membrane with 5% Non-fat Milk/ TBS for 1.5 hour at RT. The membrane was incubated with rabbit anti-PEF1 antigen affinity purified polyclonal antibody (Catalog # A09591-2) at 0.5 ug/mL overnight at 4°C, then washed with TBS-0.1%Tween 3 times with 5 minutes each and probed with a goat anti-rabbit IgG-HRP secondary antibody at a dilution of 1:10000 for 1.5 hour at RT. The signal is developed using an Enhanced Chemiluminescent detection (ECL) kit (Catalog # EK1002) with Tanon 5200 system. A specific band was detected for PEF1 at approximately 30KD. The expected band size for PEF1 is at 30KD.

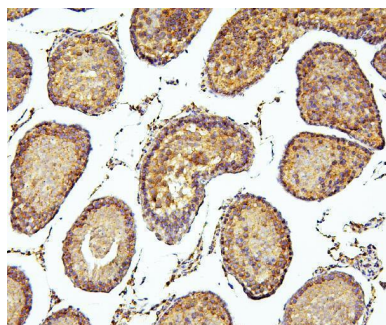


Western blot analysis of PEF1 using anti-PEF1 antibody (A09591-2). Electrophoresis was performed on a 5-20% SDS-PAGE gel at 70V (Stacking gel) / 90V (Resolving gel) for 2-3 hours. The sample well of each lane was loaded with 50ug of sample under reducing conditions. Lane 1: rat lung tissues lysates Lane 2: rat testicular tissue lysates Lane 3: mouse lung tissue lysates Lane 4: mouse testicular tissue lysates After Electrophoresis, proteins were transferred to a Nitrocellulose membrane at 150mA for 50-90 minutes. Blocked the membrane with 5% Non-fat Milk/ TBS for 1.5 hour at RT. The membrane was incubated with rabbit anti-PEF1 antigen affinity purified polyclonal antibody (Catalog # A09591-2) at 0.5 ug/mL overnight at 4°C, then washed with TBS-0.1%Tween 3 times with 5 minutes each and probed with a goat anti-rabbit IgG-HRP secondary antibody at a dilution of 1:10000 for 1.5 hour at RT. The signal is developed using an Enhanced Chemiluminescent detection (ECL) kit (Catalog # EK1002) with Tanon 5200 system. A specific band was detected for PEF1 at approximately 30KD. The expected band size for PEF1 is at 30KD.

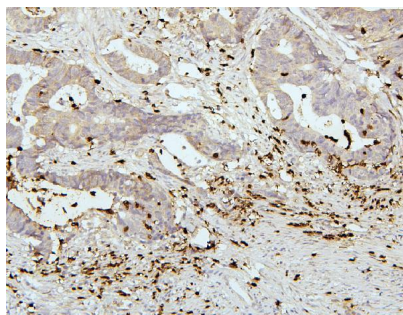
IHC analysis of PEF1 using anti-PEF1 antibody (A09591-2). PEF1 was detected in paraffin-embedded section of mouse testis tissues. Heat mediated antigen retrieval was performed in citrate buffer (pH6, epitope retrieval solution) for 20 mins. The tissue section was blocked with 10% goat serum. The tissue section was then incubated with 1ug/ml rabbit anti-PEF1 Antibody (A09591-2) overnight at 4°C. Biotinylated goat anti-rabbit IgG was used as secondary



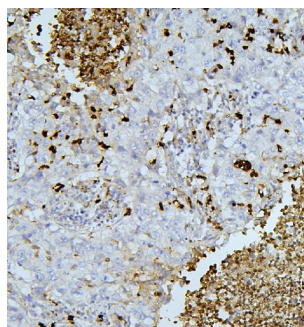
antibody and incubated for 30 minutes at 37°C. The tissue section was developed using Streptavidin-Biotin-Complex (SABC)(Catalog # SA1022) with DAB as the chromogen.



IHC analysis of PEF1 using anti-PEF1 antibody (A09591-2).PEF1 was detected in paraffin-embedded section of rat testis tissues. Heat mediated antigen retrieval was performed in citrate buffer (pH6, epitope retrieval solution) for 20 mins. The tissue section was blocked with 10% goat serum. The tissue section was then incubated with 1ug/ml rabbit anti-PEF1 Antibody (A09591-2) overnight at 4°C. Biotinylated goat anti-rabbit IgG was used as secondary antibody and incubated for 30 minutes at 37°C. The tissue section was developed using Streptavidin-Biotin-Complex (SABC)(Catalog # SA1022) with DAB as the chromogen.



IHC analysis of PEF1 using anti-PEF1 antibody (A09591-2).PEF1 was detected in paraffin-embedded section of human colon cancer tissues. Heat mediated antigen retrieval was performed in citrate buffer (pH6, epitope retrieval solution) for 20 mins. The tissue section was blocked with 10% goat serum. The tissue section was then incubated with 1ug/ml rabbit anti-PEF1 Antibody (A09591-2) overnight at 4°C. Biotinylated goat anti-rabbit IgG was used as secondary antibody and incubated for 30 minutes at 37°C. The tissue section was developed using Streptavidin-Biotin-Complex (SABC)(Catalog # SA1022) with DAB as the chromogen.



IHC analysis of PEF1 using anti-PEF1 antibody (A09591-2).PEF1 was detected in paraffin-embedded section of human lung cancer tissues. Heat mediated antigen retrieval was performed in citrate buffer (pH6, epitope retrieval solution) for 20 mins. The tissue section was blocked with 10% goat serum. The tissue section was then incubated with 1ug/ml rabbit anti-PEF1 Antibody (A09591-2) overnight at 4°C. Biotinylated goat anti-rabbit IgG was used as secondary antibody and incubated for 30 minutes at 37°C. The tissue section was developed using Streptavidin-Biotin-Complex (SABC)(Catalog # SA1022) with DAB as the chromogen.

Submit a product review to Biocompare.com

Submit a review of this product to Biocompare.com to receive a \$20 Amazon.com giftcard! Your reviews help your fellow scientists make the right decisions. Thank you for your contribution.



Anti-PEF1 Antibody

For Research Use Only. Not for use in diagnostic procedures.