

Anti-MTCH1 Antibody

Catalog Number: A09592

About MTCH1

Cadherins are calcium-dependent cell adhesion proteins. They preferentially interact with themselves in a homophilic manner in connecting cells; cadherins may thus contribute to the sorting of heterogeneous cell types.

Shimoyama Y., Biochem. J. 349:159-167(2000).

The MGC Project Team, Genome Res. 14:2121-2127(2004).

Tanihara H., Cell Adhes. Commun. 2:15-26(1994).

Overview

Product Name	Anti-MTCH1 Antibody
Reactive Species	Human, Mouse, Rat
Description	Boster Bio Anti-MTCH1 Antibody catalog # A09592. Tested in WB,IHC applications. This antibody reacts with Human,Mouse,Rat.
Application	IHC, WB
Clonality	Polyclonal
Formulation	Rabbit IgG, 1mg/ml in PBS with 0.02% sodium azide, 50% glycerol, pH7.2
Storage Instructions	Store at -20°C for one year. For short term storage and frequent use, store at 4°C for up to one month. Avoid repeated freeze-thaw cycles.
Host	Rabbit
Uniprot ID	Q9NZJ7

Technical Details

Immunogen	Synthesized peptide derived from part region of human protein
Predicted Reactive Species	Chimpanzee, Drosophila, Macaque
Isotype	IgG
Form	Liquid
Concentration	1 mg/ml
Purification	The antibody was affinity-purified from rabbit antiserum by affinity-chromatography using epitope-specific immunogen and the purity is > 95% (by SDS-PAGE).

Suggested Dilutions

Dilute the sample so that the expected range of concentrations fall within the detection range of this kit.

If the expected range of concentration is unknown, a pilot test should be conducted to decide the optimal dilution ratio for your samples.

Some PubMed article(s) citing the expression level of this target are as follows:

Boster Bio's internal QC testing used:

WB: 1:500-1:2000

IHC: 1:50-1:200

Anti-MTCH1 Antibody (A09592) Images

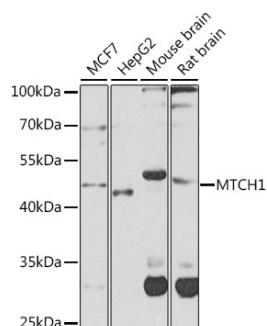


Figure 1. Western blotting validation for Anti-MTCH1 Antibody A09592

Western blot analysis of extracts of various cell lines

Submit a product review to Biocompare.com

Submit a review of this product to Biocompare.com to receive a \$20 Amazon.com giftcard! Your reviews help your fellow scientists make the right decisions. Thank you for your contribution.



Anti-MTCH1 Antibody