

Anti-PEAR1 Antibody

Catalog Number: A09593

About PEAR1

Platelet endothelial aggregation receptor 1 (PEAR1) is a platelet receptor that signals upon the formation of platelet-platelet contacts independent of platelet activation and secondary to platelet aggregation. Upon platelet aggregation stimulated by physiological agonists, PEAR1 becomes tyrosine- and serine-phosphorylated; the tyrosine phosphorylation can be inhibited by eptifibatid, an allb β 3 antagonist that also inhibits platelet aggregation. Recent studies have indicated that genetic variations in PEAR1, may be associated with enhanced agonist-induced platelet aggregation.

Overview

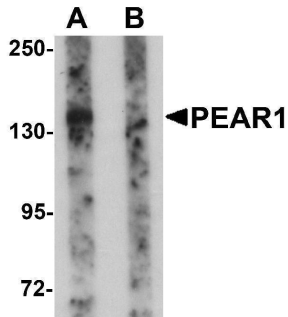
Product Name	Anti-PEAR1 Antibody
Reactive Species	Human, Mouse, Rat
Description	Boster Bio Anti-PEAR1 Antibody (Catalog # A09593). Tested in ELISA, WB, IHC-P, IF applications. This antibody reacts with Human, Mouse, Rat.
Application	ELISA, IF, IHC-P, WB
Clonality	Polyclonal
Formulation	PEAR1 Antibody is supplied in PBS containing 0.02% sodium azide.
Storage Instructions	PEAR1 antibody can be stored at 4°C for three months and -20°C, stable for up to one year. Avoid repeated freeze-thaw cycles. Antibodies should not be exposed to prolonged high temperatures.
Host	Rabbit
Uniprot ID	Q5VY43

Technical Details

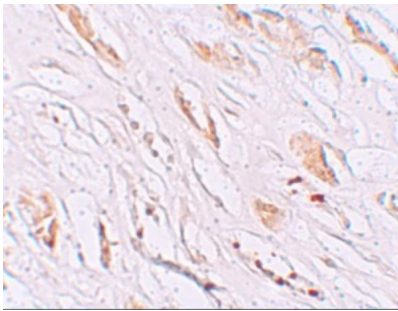
Immunogen	PEAR1 antibody was raised against a 16 amino acid synthetic peptide near the carboxy terminus of human PEAR1. The immunogen is located within the last 50 amino acids of PEAR1.
Predicted Reactive Species	Bovine, Chicken, Mouse, Rat
Isotype	IgG
Form	Liquid
Concentration	1 mg/mL
Purification	PEAR1 Antibody is affinity chromatography purified via peptide column.
Suggested Dilutions	PEAR1 antibody can be used for detection of PEAR1 by Western blot at 1 ug/mL. Antibody can also be used for immunohistochemistry starting at 2.5 ug/mL. For immunofluorescence start at 20 ug/mL.

Antibody validated: Western Blot in rat samples; Immunohistochemistry in human samples and Immunofluorescence in human samples. All other applications and species not yet tested. Optimal dilutions for each application should be determined by the researcher.

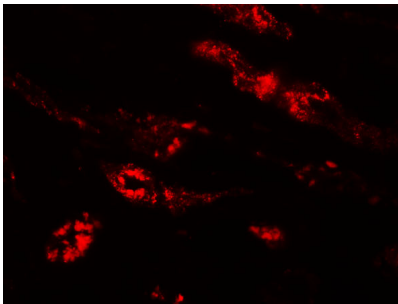
Anti-PEAR1 Antibody (A09593) Images



Western blot analysis of PEAR1 in rat kidney tissue lysate with PEAR1 antibody at 1 ug/mL in (A) the absence and (B) the presence of blocking peptide.



Immunohistochemistry of PEAR1 in human kidney tissue with PEAR1 antibody at 2.5 ug/mL.



Immunofluorescence of PEAR1 in human kidney tissue with PEAR1 antibody at 20 ug/mL.

Submit a product review to [Biocompare.com](https://www.biocompare.com)

Submit a review of this product to [Biocompare.com](https://www.biocompare.com) to receive a \$20 Amazon.com giftcard! Your reviews help your fellow scientists make the right decisions. Thank you for your contribution.



Anti-PEAR1 Antibody

For Research Use Only. Not for use in diagnostic procedures.