

Anti-FREM1 Antibody

Catalog Number: A09605

About FREM1

FREM1 is a member of the FRAS1-related extracellular matrix protein family and is thought to play a role in craniofacial and renal development. FREM1 functions as an extracellular matrix protein that is essential for epidermal adhesion during embryogenesis and may also participate in epidermal differentiation. It is recognized by cells in the embryonic skin and hair follicles through different members of the integrin family. Deficiency in the Fras1/Frem genes gives rise to the bleb phenotype, which is equivalent to the human hereditary disorder Fraser syndrome.

Overview

Product Name	Anti-FREM1 Antibody
Reactive Species	Human, Mouse
Description	Boster Bio Anti-FREM1 Antibody (Catalog # A09605). Tested in ELISA, WB, ICC, IF applications. This antibody reacts with Human, Mouse.
Application	ELISA, IF, ICC, WB
Clonality	Polyclonal
Formulation	FREM1 Antibody is supplied in PBS containing 0.02% sodium azide.
Storage Instructions	FREM1 antibody can be stored at 4°C for three months and -20°C, stable for up to one year. Avoid repeated freeze-thaw cycles. Antibodies should not be exposed to prolonged high temperatures.
Host	Rabbit
Uniprot ID	Q5H8C1

Technical Details

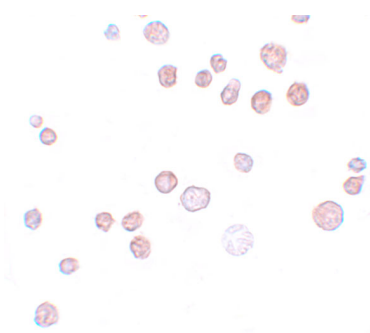
Immunogen	FREM1 antibody was raised against a 15 amino acid synthetic peptide near the carboxy terminus of human FREM1. The immunogen is located within the last 50 amino acids of FREM1.
Predicted Reactive Species	Bovine, Chicken, Mouse, Rat
Isotype	IgG
Form	Liquid
Concentration	1 mg/mL
Purification	FREM1 Antibody is affinity chromatography purified via peptide column.
Suggested Dilutions	FREM1 antibody can be used for detection of FREM1 by Western blot at 0.5 - 1 ug/mL. Antibody can also be used for immunocytochemistry starting at 20 ug/mL. For immunofluorescence start at 20 ug/mL.

Antibody validated: Western Blot in human samples; Immunocytochemistry in human samples and Immunofluorescence in human samples. All other applications and species not yet tested. Optimal dilutions for each application should be determined by the researcher.

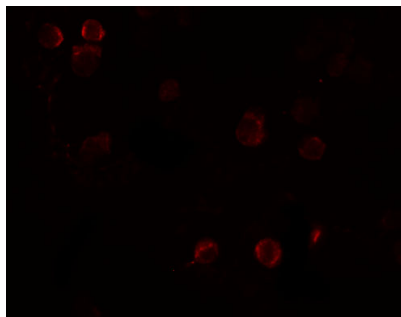
Anti-FREM1 Antibody (A09605) Images



Western blot analysis of FREM1 in K562 cell lysate with FREM1 antibody at (A) 0.5 and (B) 1ug/mL.



Immunocytochemistry of FREM1 in K562 cells with FREM1 antibody at 20 ug/mL.



Immunofluorescence of FREM1 in K562 cells with FREM1 antibody at 20 ug/mL.

Submit a product review to [Biocompare.com](https://www.biocompare.com)

Submit a review of this product to [Biocompare.com](https://www.biocompare.com) to receive a \$20 Amazon.com giftcard! Your reviews help your fellow scientists make the right decisions. Thank you for your contribution.



Anti-FREM1 Antibody

For Research Use Only. Not for use in diagnostic procedures.