

## Anti-P2Y14/P2ry14 Antibody Picoband™

Catalog Number: A09607-3

### About P2ry14

The product of this gene belongs to the family of G-protein coupled receptors, which contains several receptor subtypes with different pharmacological selectivity for various adenosine and uridine nucleotides. This receptor is a P2Y purinergic receptor for UDP-glucose and other UDP-sugars coupled to G-proteins. It has been implicated in extending the known immune system functions of P2Y receptors by participating in the regulation of the stem cell compartment, and it may also play a role in neuroimmune function. Two transcript variants encoding the same protein have been identified for this gene.

### Overview

Product Name	Anti-P2Y14/P2ry14 Antibody Picoband™
Reactive Species	Mouse, Rat
Description	Boster Bio Anti-P2Y14/P2ry14 Antibody Picoband™ catalog # A09607-3. Tested in ELISA, Flow Cytometry, WB applications. This antibody reacts with Mouse, Rat.
Application	ELISA, Flow Cytometry, WB
Clonality	Polyclonal
Formulation	Each vial contains 4mg Trehalose, 0.9mg NaCl, 0.2mg Na2HPO4, 0.01mg NaN3.
Storage Instructions	Store at -20°C for one year from date of receipt. After reconstitution, at 4°C for one month. It can also be aliquotted and stored frozen at -20°C for six months. Avoid repeated freeze-thaw cycles.
Host	Rabbit
Uniprot ID	Q9ESG6

### Technical Details

Immunogen	E.coli-derived mouse P2Y14/P2ry14 recombinant protein (Position: N17-L338).
Recommended Detection Systems	Boster recommends Enhanced Chemiluminescent Kit with anti-Rabbit IgG (EK1002) for Western blot.
Cross Reactivity	No cross-reactivity with other proteins.
Isotype	Rabbit IgG
Form	Lyophilized
Concentration	Adding 0.2 ml of distilled water will yield a concentration of 500 ug/ml.
Purification	Immunogen affinity purified.

**Suggested Dilutions**

Dilute the sample so that the expected range of concentrations fall within the detection range of this kit.

If the expected range of concentration is unknown, a pilot test should be conducted to decide the optimal dilution ratio for your samples.

Some PubMed article(s) citing the expression level of this target are as follows:

Boster Bio's internal QC testing used:

Western blot, 0.25-0.5ug/ml, Rat

Flow Cytometry, 1-3ug/1x10<sup>6</sup> cells, Mouse

Direct ELISA, 0.1-0.5ug/ml, Mouse

## Anti-P2Y14/P2ry14 Antibody Picoband™ (A09607-3) Images

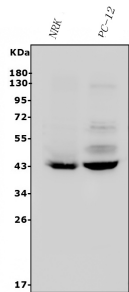


Figure 1. Western blot analysis of P2Y14/P2ry14 using anti-P2Y14/P2ry14 antibody (A09607-3). Electrophoresis was performed on a 5-20% SDS-PAGE gel at 70V (Stacking gel) / 90V (Resolving gel) for 2-3 hours. The sample well of each lane was loaded with 30ug of sample under reducing conditions.

Lane 1: rat NRK whole cell lysates,  
Lane 2: rat PC-12 whole cell lysates.

After Electrophoresis, proteins were transferred to a Nitrocellulose membrane at 150mA for 50-90 minutes. Blocked the membrane with 5% Non-fat Milk/ TBS for 1.5 hour at RT. The membrane was incubated with rabbit anti-P2Y14/P2ry14 antigen affinity purified polyclonal antibody (Catalog # A09607-3) at 0.5 ug/mL overnight at 4°C, then washed with TBS-0.1%Tween 3 times with 5 minutes each and probed with a goat anti-rabbit IgG-HRP secondary antibody at a dilution of 1:5000 for 1.5 hour at RT. The signal is developed using an Enhanced Chemiluminescent detection (ECL) kit (Catalog # EK1002) with Tanon 5200 system. A specific band was detected for P2Y14/P2ry14 at approximately 40KD. The expected band size for P2Y14/P2ry14 is at 40KD.

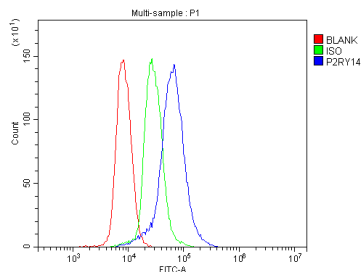


Figure 2. Flow Cytometry analysis of mouse spleen tissue using anti-P2Y14/P2ry14 antibody (A09607-3).

Overlay histogram showing mouse spleen tissue stained with A09607-3 (Blue line).The tissue section was blocked with 10% normal goat serum. And then incubated with rabbit anti-P2Y14/P2ry14 Antibody (A09607-3, 1ug/1x10<sup>6</sup> cells) for 30 min at 20°C. DyLight®488 conjugated goat anti-rabbit IgG (BA1127, 5-10ug/1x10<sup>6</sup> cells) was used as secondary antibody for 30 minutes at 20°C. Isotype control antibody (Green line) was rabbit IgG (1ug/1x10<sup>6</sup>) used under the same conditions. Unlabelled sample (Red line) was also used as a control.

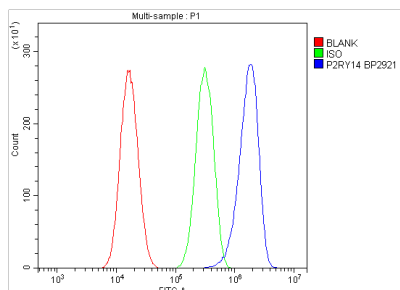


Figure 3. Flow Cytometry analysis of Neuro-2a cells using anti-P2Y14/P2ry14 antibody (A09607-3).

Overlay histogram showing Neuro-2a cells stained with A09607-3 (Blue line).The cells were blocked with 10% normal goat serum. And then incubated with rabbit anti-P2Y14/P2ry14 Antibody (A09607-3, 1ug/1x10<sup>6</sup> cells) for 30 min at 20°C. DyLight®488 conjugated goat anti-rabbit IgG (BA1127, 5-10ug/1x10<sup>6</sup> cells) was used as secondary antibody for 30 minutes at 20°C. Isotype control antibody (Green line) was rabbit IgG (1ug/1x10<sup>6</sup>) used under the same conditions. Unlabelled sample (Red line) was also used as a control.

Submit a review of this product to Biocompare.com to receive a \$20 Amazon.com giftcard! Your reviews help your fellow scientists make the right decisions. Thank you for your contribution.



## Anti-P2Y14/P2ry14 Antibody