

Anti-ATP11A Antibody

Catalog Number: A09625

About ATP11A

ATP11A is a widely expressed integral membrane ATPase. ATP11A is probably phosphorylated in its intermediate state and likely drives the transport of ions such as calcium or other molecules across membranes. While the exact molecule ATP11A transports is unknown, increased expression of ATP11A mRNA has been observed in murine leukemia cells made resistant to anti-cancer drugs such as farnesyltransferase inhibitors (FTIs). Furthermore, overexpression of ATP11A provided protection against the FTI SCH66336 while knockdown of ATP11A via siRNA made cells more sensitive to this drug. Other reports suggest that elevated levels of ATP11A mRNA may also be a predictive marker of metastasis in colorectal cancer patients.

Overview

| | |
|----------------------|---|
| Product Name | Anti-ATP11A Antibody |
| Reactive Species | Human, Mouse, Rat |
| Description | Boster Bio Anti-ATP11A Antibody (Catalog # A09625). Tested in ELISA, WB, ICC, IF applications. This antibody reacts with Human, Mouse, Rat. |
| Application | ELISA, IF, ICC, WB |
| Clonality | Polyclonal |
| Formulation | ATP11A Antibody is supplied in PBS containing 0.02% sodium azide. |
| Storage Instructions | ATP11A antibody can be stored at 4°C for three months and -20°C, stable for up to one year. Avoid repeated freeze-thaw cycles. Antibodies should not be exposed to prolonged high temperatures. |
| Host | Rabbit |
| Uniprot ID | P98196 |

Technical Details

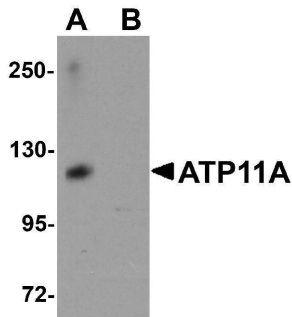
| | |
|----------------------------|---|
| Immunogen | ATP11A antibody was raised against a 19 amino acid synthetic peptide near the amino terminus of human ATP11A. The immunogen is located within the first 50 amino acids of ATP11A. |
| Predicted Reactive Species | Bovine, Chicken, Mouse, Rat |
| Isotype | IgG |
| Form | Liquid |
| Concentration | 1 mg/mL |
| Purification | ATP11A Antibody is affinity chromatography purified via peptide column. |

Suggested Dilutions

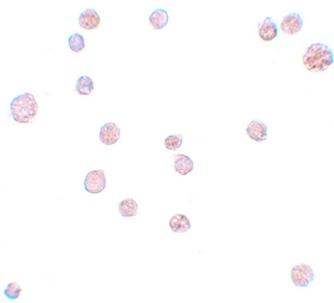
ATP11A antibody can be used for detection of ATP11A by Western blot at 1 ug/mL. Antibody can also be used for immunocytochemistry starting at 10 ug/mL. For immunofluorescence start at 20 ug/mL.

Antibody validated: Western Blot in human samples; Immunocytochemistry in human samples and Immunofluorescence in human samples. All other applications and species not yet tested. Optimal dilutions for each application should be determined by the researcher.

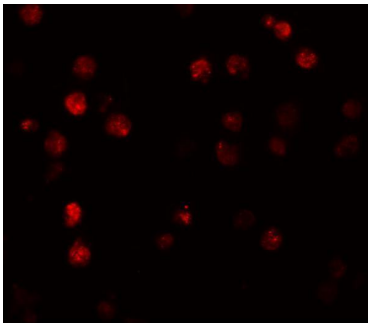
Anti-ATP11A Antibody (A09625) Images



Western blot analysis of ATP11A in K562 cell tissue lysate with ATP11A antibody at 1 ug/mL in (A) the absence and (B) the presence of blocking peptide.



Immunocytochemistry of ATP11A in K562 cells with ATP11A antibody at 10 ug/mL.



Immunofluorescence of ATP11A in K562 cells with ATP11A antibody at 20 ug/mL.

Submit a product review to [Biocompare.com](https://www.biocompare.com)

Submit a review of this product to [Biocompare.com](https://www.biocompare.com) to receive a \$20 Amazon.com giftcard! Your reviews help your fellow scientists make the right decisions. Thank you for your contribution.



Anti-ATP11A Antibody

For Research Use Only. Not for use in diagnostic procedures.