

Anti-Rhomboid-related protein 4 RHBDD1 Antibody

Catalog Number: A09636

About RHBDD1

The Rhomboid family of proteins is made up of several widely conserved polytopic membrane serine proteases that play roles in growth and development. RHBDD1 is highly expressed in the testis and is involved in the cleavage of BIK, a proapoptotic member of the Bcl-2 family. Overexpression or suppression by RNAi of RHBDD1 in 293 cells will reduce or enhance BIK-mediated apoptosis, respectively, demonstrating that RHBDD1 modulates BIK-mediated apoptotic activity. In GC-1 cells, a spermatogonia cell line that can differentiate into spermatids within the seminiferous tubules, suppression of RHBDD1 expression by RNAi caused the cells to lose the ability to survive and differentiate in mouse seminiferous tubules, suggesting that RHBDD1 may be associated with mammalian spermatogenesis.

Overview

Product Name	Anti-Rhomboid-related protein 4 RHBDD1 Antibody
Reactive Species	Human, Mouse
Description	Boster Bio Anti-Rhomboid-related protein 4 RHBDD1 Antibody (Catalog # A09636). Tested in ELISA, WB applications. This antibody reacts with Human, Mouse.
Application	ELISA, WB
Clonality	Polyclonal
Formulation	RHBDD1 Antibody is supplied in PBS containing 0.02% sodium azide.
Storage Instructions	RHBDD1 antibody can be stored at 4°C for three months and -20°C, stable for up to one year. Avoid repeated freeze-thaw cycles. Antibodies should not be exposed to prolonged high temperatures.
Host	Rabbit
Uniprot ID	Q8TEB9

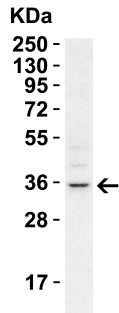
Technical Details

Immunogen	RHBDD1 antibody was raised against a 14 amino acid synthetic peptide from near the carboxy terminus of human RHBDD1. The immunogen is located within the last 50 amino acids of RHBDD1.
Predicted Reactive Species	Rat
Isotype	IgG
Form	Liquid
Concentration	1 mg/mL
Purification	RHBDD1 Antibody is affinity chromatography purified via peptide column.

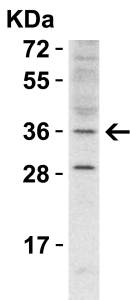
Suggested Dilutions

RHBDD1 antibody can be used for detection of RHBDD1 by Western blot at 1 ug/mL.
Antibody validated: Western Blot in human and mouse samples. All other applications and species not yet tested. Optimal dilutions for each application should be determined by the researcher.

Anti-Rhomboid-related protein 4 RHBDD1 Antibody (A09636) Images



WB Validation in A549 Cells Loading: 15 ug of cell lysate
Antibodies: RHBDD1, A09636 1 ug/ml, 1 h incubation at RT
in 5% NFDm/TBST. Secondary: Goat Anti-Rabbit IgG HRP
conjugate at 1:10000 dilution. Exposure: 1 min



WB Validation in Mouse Heart Loading: 15 ug of lysate
Antibodies: RHBDD1, A09636 1 ug/ml, 1 h incubation at RT
in 5% NFDm/TBST. Secondary: Goat Anti-Rabbit IgG HRP
conjugate at 1:10000 dilution. Exposure: 5 min

Submit a product review to [Biocompare.com](https://www.biocompare.com)

Submit a review of this product to [Biocompare.com](https://www.biocompare.com) to receive a \$20 Amazon.com giftcard! Your reviews help your fellow scientists make the right decisions. Thank you for your contribution.



Anti-Rhomboid-related protein 4 RHBDD1 Antibody

For Research Use Only. Not for use in diagnostic procedures.