

## Anti-SS18L1 Antibody

Catalog Number: A09640

### About SS18L1

Involved in organization of the bipolar mitotic spindle. Required for bipolar spindle assembly, mitosis progression and cytokinesis. May act by stabilizing interphase microtubules.

Saffin J.-M., Proc. Natl. Acad. Sci. U.S.A. 102:11302-11307(2005).

Ota T., Nat. Genet. 36:40-45(2004).

Hillier L.W., Nature 434:724-731(2005).

### Overview

Product Name	Anti-SS18L1 Antibody
Reactive Species	Human, Mouse, Rat
Description	Boster Bio Anti-SS18L1 Antibody catalog # A09640. Tested in WB applications. This antibody reacts with Human,Mouse,Rat.
Application	WB
Clonality	Polyclonal
Formulation	Rabbit IgG, 1mg/ml in PBS with 0.02% sodium azide, 50% glycerol, pH7.2
Storage Instructions	Store at -20°C for one year. For short term storage and frequent use, store at 4°C for up to one month. Avoid repeated freeze-thaw cycles.
Host	Rabbit
Uniprot ID	O75177

### Technical Details

Immunogen	Synthesized peptide derived from internal of human MAP9.
Predicted Reactive Species	Chimpanzee, Drosophila, Macaque
Isotype	IgG
Form	Liquid
Concentration	1 mg/ml
Purification	The antibody was affinity-purified from rabbit antiserum by affinity-chromatography using epitope-specific immunogen and the purity is > 95% (by SDS-PAGE).

**Suggested Dilutions**

Dilute the sample so that the expected range of concentrations fall within the detection range of this kit.

If the expected range of concentration is unknown, a pilot test should be conducted to decide the optimal dilution ratio for your samples.

Some PubMed article(s) citing the expression level of this target are as follows:

Boster Bio's internal QC testing used:

WB: 1:500-1:2000

## Anti-SS18L1 Antibody (A09640) Images

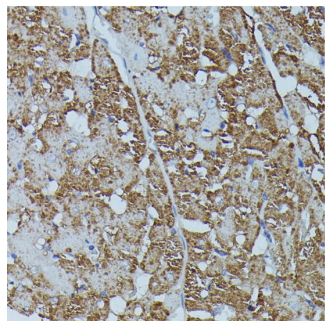


Figure 3. Immunofluorescent staining data of SS18L1 using Anti-SS18L1 Antibody (A09640).

Immunofluorescence analysis of HeLa cells using SS18L1 antibody.

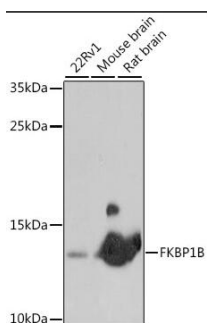


Figure 2. Immunohistochemistry validation of SS18L1 using Anti-SS18L1 Antibody (A09640).

Immunohistochemistry of paraffin-embedded mouse brain using SS18L1 antibody.  
For more protocol information of IHC

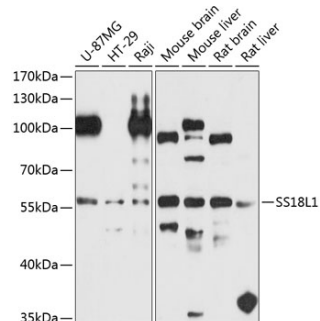


Figure 1. Western blotting validation for Anti-SS18L1 Antibody A09640

Western blot analysis of extracts of various cell lines

## Submit a product review to Biocompare.com

Submit a review of this product to Biocompare.com to receive a \$20 Amazon.com giftcard! Your reviews help your fellow scientists make the right decisions. Thank you for your contribution.



Anti-SS18L1 Antibody