

Anti-ONECUT2 Antibody Picoband™

Catalog Number: A09652-1

About ONECUT2

In molecular biology, the CUT domain (also known as ONECUT) is a DNA-binding motif which can bind independently or in cooperation with the homeodomain, which is often found downstream of the CUT domain. It is mapped to 18q21.31. This gene encodes a member of the onecut family of transcription factors, which are characterized by a cut domain and an atypical homeodomain. The protein binds to specific DNA sequences and stimulates expression of target genes, including genes involved in melanocyte and hepatocyte differentiation.

Overview

Product Name	Anti-ONECUT2 Antibody Picoband™
Reactive Species	Human, Mouse
Description	Boster Bio Anti-ONECUT2 Antibody Picoband™ catalog # A09652-1. Tested in WB applications. This antibody reacts with Human, Mouse.
Application	WB
Clonality	Polyclonal
Formulation	Each vial contains 4mg Trehalose, 0.9mg NaCl, 0.2mg Na2HPO4, 0.05mg NaN3.
Storage Instructions	Store at -20°C for one year from date of receipt. After reconstitution, at 4°C for one month. It can also be aliquotted and stored frozen at -20°C for six months. Avoid repeated freeze-thaw cycles.
Host	Rabbit
Uniprot ID	O95948

Technical Details

Immunogen	A synthetic peptide corresponding to a sequence of human ONECUT2 (MKAAYTAYRCLTKDLEGCAMNPELTMESLGLH).
Recommended Detection Systems	Boster recommends Enhanced Chemiluminescent Kit with anti-Rabbit IgG (EK1002) for Western blot.
Cross Reactivity	No cross-reactivity with other proteins.
Isotype	Rabbit IgG
Form	Lyophilized
Concentration	Adding 0.2 ml of distilled water will yield a concentration of 500 µg/ml.
Purification	Immunogen affinity purified.

Suggested Dilutions

Dilute the sample so that the expected range of concentrations fall within the detection range of this kit.

If the expected range of concentration is unknown, a pilot test should be conducted to decide the optimal dilution ratio for your samples.

Some PubMed article(s) citing the expression level of this target are as follows:

Boster Bio's internal QC testing used Western blot, 0.1-0.5 μ g/ml

For protocols, please visit <https://www.bosterbio.com/protocol-and-troubleshooting/>

Anti-ONECUT2 Antibody Picoband™ (A09652-1) Images

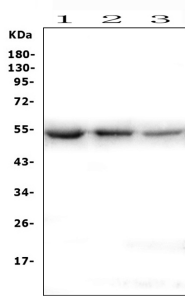


Figure 1. Western blot analysis of ONECUT2 using anti-ONECUT2 antibody (A09652-1).

Electrophoresis was performed on a 5-20% SDS-PAGE gel at 70V (Stacking gel) / 90V (Resolving gel) for 2-3 hours. The sample well of each lane was loaded with 50ug of sample under reducing conditions.

Lane 1: human K562 whole cell lysates,

Lane 2: human HEK293 whole cell lysates,

Lane 3: human HepG2 whole cell lysates.

After Electrophoresis, proteins were transferred to a Nitrocellulose membrane at 150mA for 50-90 minutes.

Blocked the membrane with 5% Non-fat Milk/ TBS for 1.5 hour at RT. The membrane was incubated with rabbit anti-ONECUT2 antigen affinity purified polyclonal antibody (Catalog # A09652-1) at 0.5 µg/mL overnight at 4°C, then washed with TBS-0.1%Tween 3 times with 5 minutes each and probed with a goat anti-rabbit IgG-HRP secondary antibody at a dilution of 1:10000 for 1.5 hour at RT. The signal is developed using an Enhanced Chemiluminescent detection (ECL) kit (Catalog # EK1002) with Tanon 5200 system. A specific band was detected for ONECUT2 at approximately 54KD. The expected band size for ONECUT2 is at 54KD.

Submit a product review to [Biocompare.com](https://www.biocompare.com)

Submit a review of this product to [Biocompare.com](https://www.biocompare.com) to receive a \$20 Amazon.com giftcard! Your reviews help your fellow scientists make the right decisions. Thank you for your contribution.



Anti-ONECUT2 Antibody™