

Anti-NADE BEX3 Antibody

Catalog Number: A09675

About NGFRAP1

The p75 neurotrophin receptor (p75NTR) is a member of the tumor necrosis receptor superfamily and can mediate cell death and cell survival in response to nerve growth factor (NGF). The p75NTR-associated cell death executor (NADE) mediates apoptosis by interacting with the cell death domain of p75NTR following the binding of NGF by p75NTR. Recent studies have shown that NADE also interacts with second mitochondria-derived activator of caspase (Smac). Co-expression of NADE and Smac promotes TRAIL-induced apoptosis and inhibits XIAP-mediated Smac ubiquitization. It has been suggested that it is this interaction between NADE and Smac that allows apoptosis to proceed. Finally, although initially discovered as an mRNA expressed in ovarian granulosa cells, NADE has been suggested to play a role in the neuronal death seen in epileptic brain damage.

Overview

Product Name	Anti-NADE BEX3 Antibody
Reactive Species	Human, Mouse
Description	Boster Bio Anti-NADE BEX3 Antibody (Catalog # A09675). Tested in ELISA, WB, IHC-P applications. This antibody reacts with Human, Mouse.
Application	ELISA, IHC-P, WB
Clonality	Polyclonal
Formulation	NADE Antibody is supplied in PBS containing 0.02% sodium azide.
Storage Instructions	NADE antibody can be stored at 4°C for three months and -20°C, stable for up to one year. Avoid repeated freeze-thaw cycles. Antibodies should not be exposed to prolonged high temperatures.
Host	Rabbit
Uniprot ID	Q00994

Technical Details

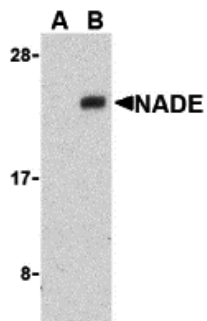
Immunogen	NADE antibody was raised against a peptide corresponding to 14 amino acids near the middle of human NADE. The immunogen is located within the last 50 amino acids of NADE.
Predicted Reactive Species	Bovine, Rat
Isotype	IgG
Form	Liquid
Concentration	1 mg/mL
Purification	NADE Antibody is affinity chromatography purified via peptide column.

Suggested Dilutions

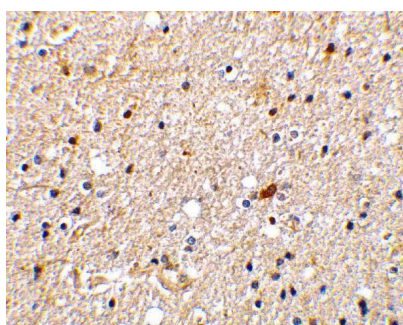
NADE antibody can be used for detection of NADE by Western blot at 1 ug/mL. Despite its predicted molecular weight, NADE migrates at ~23 kDa in SDS-PAGE. Antibody can also be used for immunohistochemistry starting at 2 ug/mL.

Antibody validated: Western Blot in human samples and Immunohistochemistry in human samples. All other applications and species not yet tested. Optimal dilutions for each application should be determined by the researcher.

Anti-NADE BEX3 Antibody (A09675) Images



Western blot analysis of NADE in Human brain cell lysates with NADE antibody at 1 ug/mL in the presence (A) or absence (B) of blocking peptide.



Immunohistochemistry of NADE in human brain tissue with NADE antibody at 2 ug/mL.

Submit a product review to Biocompare.com

Submit a review of this product to Biocompare.com to receive a \$20 Amazon.com giftcard! Your reviews help your fellow scientists make the right decisions. Thank you for your contribution.



Anti-NADE BEX3 Antibody

For Research Use Only. Not for use in diagnostic procedures.