

Anti-COMMD7 Antibody

Catalog Number: A09709

About COMMD7

COMMD7 (COMM domain-containing protein 7) plays a role in the regulation NF-kappaB (1). It associates with the NF-kB complex and suppresses its transcriptional activity (2). COMMD7 contains 1 COMM domain and widely expressed with highest expression in lung (3). COMMD7 is a newly identified gene overexpressed in hepatocellular carcinoma (HCC) (4). COMMD7 is associated with tumor invasion and poor prognosis by NF-kappaB signaling pathway (4).

Overview

Product Name	Anti-COMMD7 Antibody
Reactive Species	Human, Mouse, Rat
Description	Boster Bio Anti-COMMD7 Antibody (Catalog # A09709). Tested in ELISA, WB, IHC-P, IF applications. This antibody reacts with Human, Mouse, Rat.
Application	ELISA, IF, IHC-P, WB
Clonality	Polyclonal
Formulation	COMMD7 antibody is supplied in PBS containing 0.02% sodium azide.
Storage Instructions	COMMD7 antibody can be stored at 4°C for three months and -20°C, stable for up to one year.
Host	Rabbit
Uniprot ID	Q86VX2

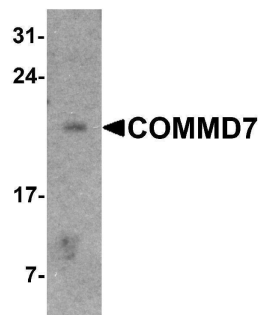
Technical Details

Immunogen	COMMD7 antibody was raised against a 19 amino acid peptide near the center of human COMMD7. The immunogen is located within amino acids 90 - 140 of COMMD7.
Predicted Reactive Species	Bovine
Cross Reactivity	COMMD7 antibody is human, mouse and rat reactive. Multiple transcript variants encoding different isoforms have been found for COMMD7.
Isotype	IgG
Form	Liquid
Concentration	1 mg/mL
Purification	COMMD7 antibody is affinity chromatography purified via peptide column.
Suggested Dilutions	COMMD7 antibody can be used for detection of COMMD7 by Western blot at 1 - 2 ug/ml. Antibody

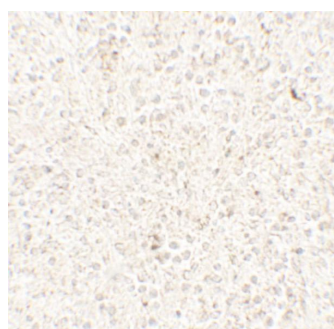
can also be used for Immunohistochemistry starting at 5 ug/mL. For immunofluorescence start at 20 ug/mL.

Antibody validated: Western Blot in mouse samples; Immunohistochemistry in human samples and Immunofluorescence in human samples. All other applications and species not yet tested. Optimal dilutions for each application should be determined by the researcher.

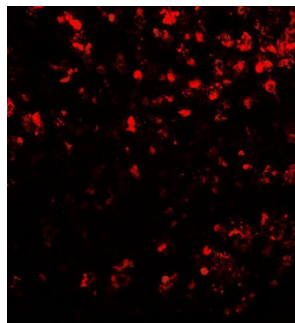
Anti-COMMD7 Antibody (A09709) Images



Western blot analysis of COMMD7 in mouse spleen tissue lysate with COMMD7 antibody at 1 ug/ml.



Immunohistochemistry of COMMD7 in human spleen tissue with COMMD7 antibody at 5 ug/mL.



Immunofluorescence of COMMD7 in human spleen tissue with COMMD7 antibody at 20 ug/mL.

Submit a product review to [Biocompare.com](https://www.biocompare.com)

Submit a review of this product to [Biocompare.com](https://www.biocompare.com) to receive a \$20 Amazon.com giftcard! Your reviews help your fellow scientists make the right decisions. Thank you for your contribution.



Anti-COMMD7 Antibody

For Research Use Only. Not for use in diagnostic procedures.