

Anti-Cybr CYTIP Antibody

Catalog Number: A09710

About CYTIP

Cybr (Pscdbp) is a new scaffold protein with significant homology to Tamalin. It contains a PDZ binding domain and a coiled-coil domain. Cybr is highly expressed in the immune system, and its expression seems to be common to nearly all immune cell populations (T cells, B cells, NK Macrophages, dendritic cells). Other organs/tissues in which Cybr is expressed include lung, kidney, intestine and testes. Cybr may play an important in vivo role in cell migration, especially when modulated by pro-inflammatory cytokines. Anti-Cybr Antibody is suitable for researchers interested in the Research Areas of Chromatin, Immunology, Neuroscience, and Signal Transduction.

Overview

Product Name	Anti-Cybr CYTIP Antibody
Reactive Species	Human, Mouse, Rat
Description	Boster Bio Anti-Cybr CYTIP Antibody (Catalog # A09710). Tested in ELISA, IP, WB applications. This antibody reacts with Human, Mouse, Rat.
Application	ELISA, IP, WB
Clonality	Polyclonal
Formulation	0.02 M Potassium Phosphate, 0.15 M Sodium Chloride, pH 7.2, 0.01% (w/v) Sodium Azide
Storage Instructions	Store PSCDBP antibody / Anti-Cybr at 4°C prior to restoration. For extended storage aliquot contents and freeze at -20°C or below. Avoid cycles of freezing and thawing. Centrifuge product if not completely clear after standing at room temperature. This product is stable for several weeks at 4°C as an undiluted liquid. Dilute only prior to immediate use. Expiration date is one (1) year from date of opening. (Ship at ambient temperature.)
Host	Rabbit
Uniprot ID	Q91VY6

Technical Details

Immunogen	PSCDBP antibody was prepared from whole rabbit serum produced by repeated immunizations with a synthetic peptide corresponding to a region in the C-terminal portion of mouse Cybr.
Predicted Reactive Species	Bovine, Equine, Guinea Pig, Rabbit
Isotype	Antiserum
Form	Lyophilized
Concentration	85 mg/mL by Refractometry
Purification	This Cybr antibody is directed against mouse Cybr. The product is delipidated and defibrinated

antiserum. A BLAST analysis was used to suggest cross-reactivity with Cybr from mouse and rat based on a 100% homology with the immunizing sequence. Reactivity against homologues from other sources is not known.

Suggested Dilutions

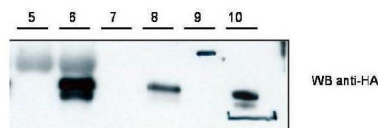
ELISA: 1:5,000 - 1:20,000

IP: 1:100

WB: 1:1,000 - 1:10,000

This antibody has been tested for use in ELISA and immunoprecipitation. Specific conditions for reactivity should be optimized by the end user. Expect a band approximately 40 kDa in size corresponding to Cybr by western blotting after IP in the appropriate cell lysate or extract. To date, this antibody has not shown direct detection of endogenous or over-expressed Cybr protein, but is capable of immunoprecipitating the antigen from lysates. It is possible, but has not yet been confirmed, that this antibody recognizes a conformational epitope.

Anti-Cybr CYTIP Antibody (A09710) Images



Western blot using Boster's anti-Cybr antibody shows detection of recombinant Cybr using anti-HA tag antibody after immunoprecipitation using anti-Cybr. Lane 5 contains lysate from control HEK293 cells. Lane 6 shows IP/WB of HEK293 cells expressing Cybr-HA. Lane 7 and 8 are loaded similarly to lanes 5 and 6 but were immunoprecipitated with anti-HA. Lane 9 contains marker. Lane 10 contains purified CybrHA. Personal Communication, V. Coppola, NCI, Bethesda, MD.

Submit a product review to Biocompare.com

Submit a review of this product to Biocompare.com to receive a \$20 Amazon.com giftcard! Your reviews help your fellow scientists make the right decisions. Thank you for your contribution.



Anti-Cybr CYTIP Antibody

For Research Use Only. Not for use in diagnostic procedures.