

Anti-Cybr CYTIP Antibody

Catalog Number: A09710-1

About CYTIP

This antibody is suitable for Cancer, Immunology and Nuclear Signaling research. Cybr (Pscdbp) is a new scaffold protein with significant homology to Tamalin. It contains a PDZ binding domain and a coiled-coil domain. Cybr is highly expressed in the immune system, and its expression seems to be common to nearly all immune cell populations (T cells, B cells, NK Macrophages, dendritic cells). Other organs/tissues in which Cybr is expressed include lung, kidney, intestine and testes. Cybr may play an important in vivo role in cell migration, especially when modulated by pro-inflammatory cytokines.

Overview

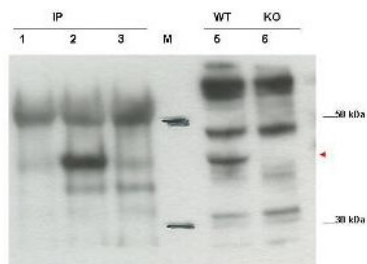
Product Name	Anti-Cybr CYTIP Antibody
Reactive Species	Mouse
Description	Boster Bio Anti-Cybr CYTIP Antibody (Catalog # A09710-1). Tested in ELISA, WB applications. This antibody reacts with Mouse.
Application	ELISA, IHC, WB
Clonality	Polyclonal
Formulation	0.02 M Potassium Phosphate, 0.15 M Sodium Chloride, pH 7.2, 0.01% (w/v) Sodium Azide
Storage Instructions	Store vial at -20°C or below prior to opening. This vial contains a relatively low volume of reagent (25 uL). To minimize loss of volume dilute 1:10 by adding 225 uL of the buffer stated above directly to the vial. Recap, mix thoroughly and briefly centrifuge to collect the volume at the bottom of the vial. Use this intermediate dilution when calculating final dilutions as recommended below. Store the vial at -20°C or below after dilution. Avoid cycles of freezing and thawing. Expiration date is three (3) months from date of opening. (Ship on dry ice.)
Host	Rabbit
Uniprot ID	Q91VY6

Technical Details

Immunogen	This antibody was prepared from whole rabbit serum produced by repeated immunizations with a synthetic peptide corresponding to a region in the carboxy terminal portion of mouse Cybr.
Predicted Reactive Species	Mouse, Rat
Isotype	IgG
Form	Liquid (sterile filtered)
Concentration	0.86 mg/mL by UV absorbance at 280 nm

Purification	This affinity purified antibody is directed against mouse Cybr. A BLAST analysis was used to suggest cross-reactivity with Cybr from mouse and rat based on a 100% homology with the immunizing sequence. Reactivity against homologues from other sources is not known.
Suggested Dilutions	ELISA: 1:5,000 - 1:20,000 IHC: User optimized WB: 1:1000 This antibody has been tested for use in ELISA, western blot, and immunoprecipitation. Specific conditions for reactivity should be optimized by the end user. Expect a band approximately 40 kDa in size corresponding to Cybr by western blotting in the appropriate cell lysate or extract. This antibody detects endogenous and over-expressed Cybr protein and is capable of immunoprecipitating the antigen from lysates.

Anti-Cybr CYTIP Antibody (A09710-1) Images



Western blot using Boster's affinity purified anti-Cybr antibody shows detection of endogenous Cybr from mouse splenocytes using anti-Cybr antibody to immunoprecipitate and western blot (lanes 1-3). Lane 1 shows reactivity of pre-immune sera. Lane 2 shows endogenous Cybr detected with antibody. Lane 3 shows no band detected in lysates prepared from splenocytes of Cybr knock-out mouse. Lane 5 shows direct western blot of wt splenocytes. Lane 6 shows direct western blot of knock out mouse. Personal Communication, V. Coppola, NCI, Bethesda, MD.

Submit a product review to [Biocompare.com](https://www.biocompare.com)

Submit a review of this product to [Biocompare.com](https://www.biocompare.com) to receive a \$20 Amazon.com giftcard! Your reviews help your fellow scientists make the right decisions. Thank you for your contribution.



Anti-Cybr CYTIP Antibody

For Research Use Only. Not for use in diagnostic procedures.