

Anti-Cysteine protease ATG4C ATG4C Antibody

Catalog Number: A09728

About ATG4C

Autophagy, the process of bulk degradation of cellular proteins through an autophagosomic-lysosomal pathway is important for normal growth control and may be defective in tumor cells. It is involved in the preservation of cellular nutrients under starvation conditions as well as the normal turnover of cytosolic components (1,2). ATG4C, also known as autophagin-3, is one of four mammalian orthologs of the yeast ATG4 protein; all four are cysteine proteases (3). Recent studies have shown that ATG4C and Beclin-1 are regulated by the microRNA miR-376b; overexpression of miR-376b led to decreased mRNA and protein levels, thereby blocking starvation and TOR inhibition-related autophagy (4).

Overview

Product Name	Anti-Cysteine protease ATG4C ATG4C Antibody
Reactive Species	Human, Mouse, Rat
Description	Boster Bio Anti-Cysteine protease ATG4C ATG4C Antibody (Catalog # A09728). Tested in ELISA, WB, IHC-P, IF applications. This antibody reacts with Human, Mouse, Rat.
Application	ELISA, IF, IHC-P, WB
Clonality	Polyclonal
Formulation	ATG4C antibody is supplied in PBS containing 0.02% sodium azide.
Storage Instructions	ATG4C antibody can be stored at 4°C for three months and -20°C, stable for up to one year.
Host	Rabbit
Uniprot ID	Q96DT6

Technical Details

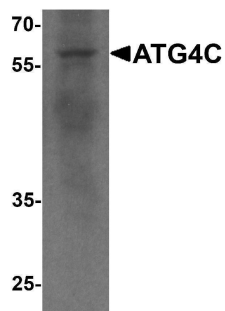
Immunogen	ATG4C antibody was raised against an 18 amino acid peptide near the carboxy terminus of human ATG4C. The immunogen is located within the last 50 amino acids of ATG4C.
Predicted Reactive Species	Bovine
Cross Reactivity	ATG4C antibody is human, mouse and rat reactive. ATG4C is predicted to not cross-react with other ATG4 proteins.
Isotype	IgG
Form	Liquid
Concentration	1 mg/mL
Purification	ATG4C antibody is affinity chromatography purified via peptide column.

Suggested Dilutions

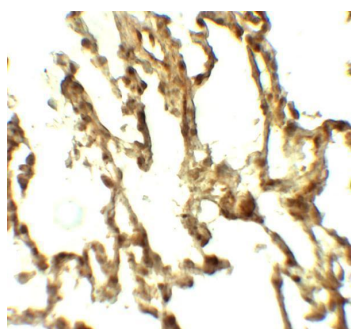
ATG4C antibody can be used for detection of ATG4C by Western blot at 1 - 2 ug/ml. Antibody can also be used for Immunohistochemistry starting at 5 ug/mL. For immunofluorescence start at 20 ug/mL.

Antibody validated: Western Blot in human samples; Immunohistochemistry in human samples and Immunofluorescence in human samples. All other applications and species not yet tested. Optimal dilutions for each application should be determined by the researcher.

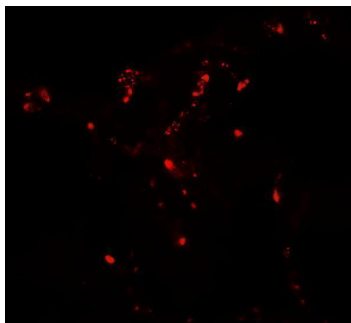
Anti-Cysteine protease ATG4C ATG4C Antibody (A09728) Images



Western blot analysis of ATG4C in A549 cell lysate with ATG4C antibody at 1 ug/ml.



Immunohistochemistry of ATG4C in human lung tissue with ATG4C antibody at 5 ug/ml.



Immunofluorescence of ATG4C in human lung tissue with ATG4C antibody at 20 ug/ml.

Submit a product review to [Biocompare.com](https://www.biocompare.com)

Submit a review of this product to [Biocompare.com](https://www.biocompare.com) to receive a \$20 Amazon.com giftcard! Your reviews help your fellow scientists make the right decisions. Thank you for your contribution.



Anti-Cysteine protease ATG4C ATG4C Antibody

For Research Use Only. Not for use in diagnostic procedures.