

Anti-Slc22A17 Antibody

Catalog Number: A09733

About SLC22A17

The Slc22 family of organic anion and cation transporters (OATs, OCTs, OCTNs) are transmembrane proteins expressed predominantly in kidney and liver. Each contain 12 predicted alpha-helical transmembrane domains (TMDs) and one large extracellular loop between TMDs 1 and 2. Transporters of the SLC22 family function in different ways such as uniporters that mediate facilitated diffusion in either direction (OCTs), as anion exchangers (OAT1, OAT3 and URAT1), and as Na(+)/l-carnitine cotransporter (OCTN2). Slc22 family members participate in the absorption and/or excretion of drugs, xenobiotics, and endogenous compounds in intestine, liver, and kidney, and perform homeostatic functions in brain and heart. Mutations in the Slc22 family may cause specific diseases such as primary systemic carnitine deficiency or idiopathic renal hypouricemia and may change drug absorption or excretion. Recent studies show the expression of Slc22A17 as receptor for Lipocalin 2 is relatively high in hematopoietic stem cells.

Overview

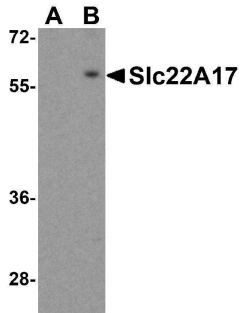
Product Name	Anti-Slc22A17 Antibody
Reactive Species	Human, Mouse, Rat
Description	Boster Bio Anti-Slc22A17 Antibody (Catalog # A09733). Tested in ELISA, WB, IF, IHC-P applications. This antibody reacts with Human, Mouse, Rat.
Application	ELISA, IF, IHC-P, WB
Clonality	Polyclonal
Formulation	Slc22A17 Antibody is supplied in PBS containing 0.02% sodium azide.
Storage Instructions	Slc22A17 antibody can be stored at 4°C for three months and -20°C, stable for up to one year. Avoid repeated freeze-thaw cycles. Antibodies should not be exposed to prolonged high temperatures.
Host	Rabbit
Uniprot ID	Q8WUG5

Technical Details

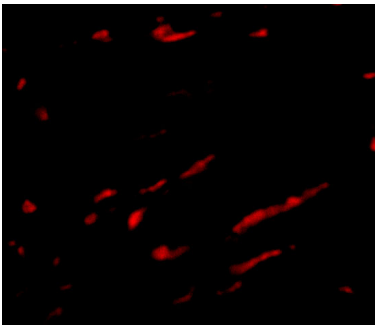
Immunogen	Slc22A17 antibody was raised against a 14 amino acid synthetic peptide near the carboxy terminus of the human Slc22A17. The immunogen is located within the last 50 amino acids of Slc22A17.
Predicted Reactive Species	Bovine
Isotype	IgG
Form	Liquid
Concentration	1 mg/mL

Purification	Slc22A17 Antibody is affinity chromatography purified via peptide column.
Suggested Dilutions	Slc22A17 antibody can be used for detection of Slc22A17 by Western blot at 0.5 ug/mL. Antibody can also be used for immunofluorescence starting at 20 ug/mL. Antibody can also be used for immunohistochemistry starting at 2.5 ug/mL. Antibody validated: Western Blot in human samples; Immunohistochemistry in mouse samples and Immunofluorescence in mouse and rat samples. All other applications and species not yet tested. Optimal dilutions for each application should be determined by the researcher.

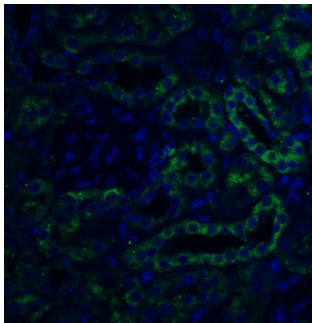
Anti-Slc22A17 Antibody (A09733) Images



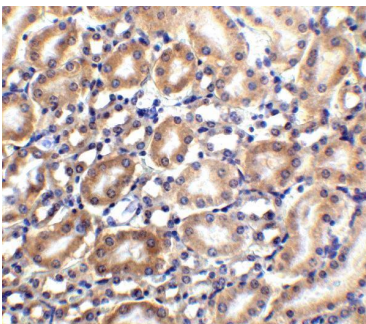
Western blot analysis of Slc22A17 in SK-N-SH lysate with Slc22A17 antibody at 0.5 ug/mL in (A) the presence and (B) the absence of blocking peptide.



Immunofluorescence of Slc22A17 in rat kidney tissue with Slc22A17 antibody at 20 ug/mL.



Immunofluorescence of SLC22A17 in mouse kidney tissue with SLC22A17 antibody at 20 ug/ml. Green: Slc22A17 Antibody (A09733) Blue: DAPI staining



Immunohistochemistry of SLC22A17 in mouse kidney tissue with SLC22A17 antibody at 2.5 ug/ml.

Submit a product review to Biocompare.com

Submit a review of this product to Biocompare.com to receive a \$20 Amazon.com giftcard! Your reviews help your fellow scientists make the right decisions. Thank you for your contribution.



Anti-Slc22A17 Antibody

For Research Use Only. Not for use in diagnostic procedures.