

Anti-Clathrin heavy chain 2 CLTCL1 Antibody

Catalog Number: A09754

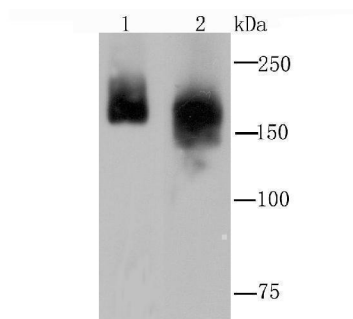
Overview

Product Name	Anti-Clathrin heavy chain 2 CLTCL1 Antibody
Reactive Species	Human, Mouse, Rat
Description	Boster Bio Anti-Clathrin heavy chain 2 CLTCL1 Antibody catalog # A09754. Tested in WB,IHC applications. This antibody reacts with Human,Mouse,Rat.
Application	IHC, WB
Clonality	Polyclonal
Formulation	Rabbit IgG, 1mg/ml in PBS with 0.02% sodium azide, 50% glycerol, pH7.2
Storage Instructions	Store at -20°C for one year. For short term storage and frequent use, store at 4°C for up to one month. Avoid repeated freeze-thaw cycles.
Host	Rabbit
Uniprot ID	P53675

Technical Details

Immunogen	recombinant protein
Isotype	IgG
Form	Liquid
Concentration	1 mg/ml
Purification	ProA affinity purified
Suggested Dilutions	WB: 1:500-1:2,000 IHC: 1:50-1:200

Anti-Clathrin heavy chain 2 CLTCL1 Antibody (A09754) Images



Western blot analysis of Clathrin heavy chain on Hela (1) and PC-12 (2) cell lysate using anti-Clathrin heavy chain antibody at 1/1,000 dilution.

Submit a product review to Biocompare.com

Submit a review of this product to Biocompare.com to receive a \$20 Amazon.com giftcard! Your reviews help your fellow scientists make the right decisions. Thank you for your contribution.



Anti-Clathrin heavy chain 2 CLTCL1 Antibody

For Research Use Only. Not for use in diagnostic procedures.