

Anti-SAPAP2 DLGAP2 Antibody

Catalog Number: A09760

About DLGAP2

SAP90/PSD-95-associated protein 2 (SAPAP2, also known as DLGAP2) is a member of a protein family whose members specifically interact with PSD-95/SAP90, a membrane-associated guanylate kinase localized at postsynaptic density (PSD) in neuronal cells. Like the other SAPAP proteins, SAPAP2 is thought to be an adaptor protein that also interacts with different synaptic scaffolding proteins, cytoskeletal and signaling components, such as focal adhesion kinase (FAK) and proline-rich tyrosine kinase 2 (PYK2). SAPAP2 mRNA is targeted to cell bodies in a similar manner to SAPAP1 and -4, whereas SAPAP3 mRNA is detected mainly in cell bodies.

Overview

Product Name	Anti-SAPAP2 DLGAP2 Antibody
Reactive Species	Human, Mouse, Rat
Description	Boster Bio Anti-SAPAP2 DLGAP2 Antibody (Catalog # A09760). Tested in ELISA, WB, IHC-P, IF applications. This antibody reacts with Human, Mouse, Rat.
Application	ELISA, IF, IHC-P, WB
Clonality	Polyclonal
Formulation	SAPAP2 Antibody is supplied in PBS containing 0.02% sodium azide.
Storage Instructions	SAPAP2 antibody can be stored at 4°C for three months and -20°C, stable for up to one year. Avoid repeated freeze-thaw cycles. Antibodies should not be exposed to prolonged high temperatures.
Host	Rabbit
Uniprot ID	Q9P1A6

Technical Details

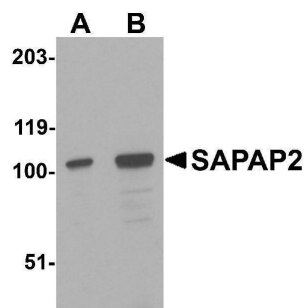
Immunogen	SAPAP2 antibody was raised against a 16 amino acid synthetic peptide from near the center of human SAPAP2. The immunogen is located within amino acids 480 - 530 of SAPAP2.
Predicted Reactive Species	Mouse, Rat
Cross Reactivity	At least three isoforms of SAPAP2 are known to exist. This SAPAP2 antibody will not cross-react with other SAPAP proteins.
Isotype	IgG
Form	Liquid
Concentration	1 mg/mL
Purification	SAPAP2 Antibody is affinity chromatography purified via peptide column.

Suggested Dilutions

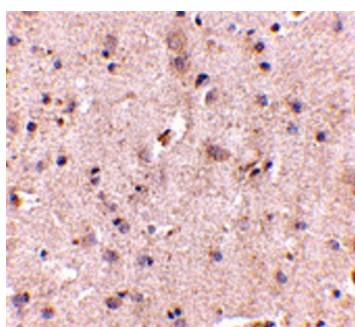
SAPAP2 antibody can be used for detection of SAPAP2 by Western blot at 0.5 - 1 ug/mL. Antibody can also be used for immunohistochemistry starting at 5 ug/mL. For immunofluorescence start at 20 ug/mL.

Antibody validated: Western Blot in human samples; Immunohistochemistry in human samples and Immunofluorescence in human samples. All other applications and species not yet tested. Optimal dilutions for each application should be determined by the researcher.

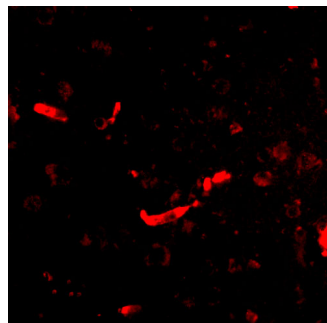
Anti-SAPAP2 DLGAP2 Antibody (A09760) Images



Western blot analysis of SAPAP2 in Raji cell lysate with SAPAP2 antibody at (A) 0.5 and (B) 1 ug/mL.



Immunohistochemistry of SAPAP2 in human brain with SAPAP2 antibody at 5 ug/mL.



Immunofluorescence of SAPAP2 in Human Brain cells with SAPAP2 antibody at 20 ug/mL.

Submit a product review to [Biocompare.com](https://www.biocompare.com)

Submit a review of this product to [Biocompare.com](https://www.biocompare.com) to receive a \$20 Amazon.com giftcard! Your reviews help your fellow scientists make the right decisions. Thank you for your contribution.



Anti-SAPAP2 DLGAP2 Antibody

For Research Use Only. Not for use in diagnostic procedures.