

## Anti-SLC36A2 Antibody

Catalog Number: A09777

### About SLC36A2

SLC36A2 is a pH-dependent proton-coupled amino acid transporter that belongs to the amino acid auxin permease 1 protein family. The encoded protein primarily transports small amino acids such as glycine, alanine and proline (1,2). Both SLC36A2 and its paralog SLC36A1 are expressed in neurons, but SLC36A2 localizes to the endoplasmic reticulum and recycling endosome, while SLC36A1 is expressed in the lysosome (2). SLC36A2 is thought to contribute to neuronal transport and sequestration of amino acids such as glycine, alanine, and proline (2). Mutations in this gene are associated with iminoglycinuria and hyperglycinuria (3).

### Overview

Product Name	Anti-SLC36A2 Antibody
Reactive Species	Human
Description	Boster Bio Anti-SLC36A2 Antibody (Catalog # A09777). Tested in ELISA, WB applications. This antibody reacts with Human.
Application	ELISA, WB
Clonality	Polyclonal
Formulation	SLC36A2 antibody is supplied in PBS containing 0.02% sodium azide.
Storage Instructions	SLC36A2 antibody can be stored at 4°C for three months and -20°C, stable for up to one year.
Host	Rabbit
Uniprot ID	Q495M3

### Technical Details

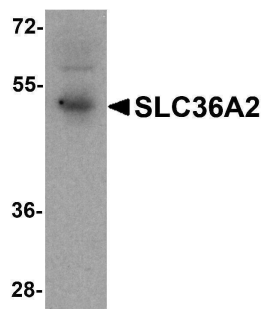
Immunogen	SLC36A2 antibody was raised against a 15 amino acid peptide near the amino terminus of human SLC36A2. The immunogen is located within amino acids 30 - 80 of SLC36A2.
Predicted Reactive Species	Mouse, Rat
Cross Reactivity	SLC36A2 antibody is human specific. SLC36A2 is predicted to not cross-react with other members of the SLC36 protein family.
Isotype	IgG
Form	Liquid
Concentration	1 mg/mL
Purification	SLC36A2 antibody is affinity chromatography purified via peptide column.

Suggested Dilutions

SLC36A2 antibody can be used for detection of SLC36A2 by Western blot at 1 - 2 ug/ml.  
Antibody validated: Western Blot in human samples. All other applications and species not yet tested. Optimal dilutions for each application should be determined by the researcher.

## Anti-SLC36A2 Antibody (A09777) Images

---



Western blot analysis of SLC36A2 in human stomach tissue lysate with SLC36A2 antibody at 1 ug/ml.

---

### Submit a product review to Biocompare.com

Submit a review of this product to Biocompare.com to receive a \$20 Amazon.com giftcard! Your reviews help your fellow scientists make the right decisions. Thank you for your contribution.



Anti-SLC36A2 Antibody

For Research Use Only. Not for use in diagnostic procedures.